

**SUN2000MA  
V100R001C00**

# **Modbus Interface Definitions**

**Issue**                08  
**Date**                 2024-07-04



**Copyright © Huawei Digital Power Technologies Co., Ltd. 2024. All rights reserved.**

No part of this document may be reproduced or transmitted in any form or by any means without prior written consent of Huawei Digital Power Technologies Co., Ltd.

## **Trademarks and Permissions**



HUAWEI and other Huawei trademarks are the property of Huawei Technologies Co., Ltd.

All other trademarks and trade names mentioned in this document are the property of their respective holders.

## **Notice**

The purchased products, services and features are stipulated by the contract made between Huawei Digital Power Technologies Co., Ltd. and the customer. All or part of the products, services and features described in this document may not be within the purchase scope or the usage scope. Unless otherwise specified in the contract, all statements, information, and recommendations in this document are provided "AS IS" without warranties, guarantees or representations of any kind, either express or implied. The information in this document is subject to change without notice. Every effort has been made in the preparation of this document to ensure accuracy of the contents, but all statements, information, and recommendations in this document do not constitute a warranty of any kind, express or implied.

## **Huawei Digital Power Technologies Co., Ltd.**

Address: Huawei Digital Power Antuoshan Headquarters  
Futian, Shenzhen 518043  
People's Republic of China

Website: <https://digitalpower.huawei.com>

---

# About This Document

---

## Change History

Issue	Date	Description
08	2024-07-04	Some register interfaces are added in this issue.
07	2024-05-21	Some grid codes are added in this issue.
06	2024-02-02	Standardized document description.
05	2023-02-16	Some register interfaces are added in this issue.
04	2023-01-10	Some register interfaces are added in this issue.
03	2022-03-29	Some register interfaces are added in this issue.
02	2022-01-21	This issue is the second official release.
01	2019-10-31	This issue is the first official release.

---

# Contents

---

<b>About This Document.....</b>	<b>ii</b>
<b>1 Supported Models.....</b>	<b>1</b>
1.1 Model Description.....	1
<b>2 Overview.....</b>	<b>8</b>
2.1 Terms and Abbreviations.....	8
<b>3 Register Definitions.....</b>	<b>10</b>
3.1 Inverter Equipment Register.....	10
3.2 Battery Equipment Register.....	27
3.3 Meter Equipment Register.....	71
<b>4 Customized Interfaces.....</b>	<b>74</b>
4.1 Obtaining the System Information of Optimizers.....	74
4.2 Obtaining Real-time Data of Optimizers.....	77
<b>5 Interface Instructions.....</b>	<b>81</b>
5.1 Alarm Information.....	81
5.2 Power Grid Scheduling.....	84
5.2.1 $\cos\phi$ -P/Pn Characteristic Curve.....	84
5.2.2 Q-U Characteristic Curve.....	85
5.2.3 PF-U Characteristic Curve.....	86
5.3 Grid Codes.....	87
5.4 Energy Storage Specifications.....	102
<b>6 Overview of the Communications Protocol.....</b>	<b>107</b>
6.1 Physical Layer.....	107
6.2 Data Link Layer.....	107
6.2.1 Modbus-RTU.....	108
6.2.1.1 ADU Length.....	108
6.2.1.2 Communications Address.....	108
6.2.1.3 CRC.....	108
6.2.2 Modbus-TCP.....	109
6.2.2.1 ADU Length.....	109
6.2.2.2 MBAP Packet Header.....	110
6.2.2.3 Communications Address.....	111

6.2.2.4 TCP Port.....	111
6.2.2.5 TCP Link Establishment Process.....	111
6.3 Application Layer.....	112
6.3.1 Function Code List.....	112
6.3.2 Exception Code List.....	112
6.3.3 Reading Registers (0x03).....	114
6.3.3.1 Frame Format of a Request from a Master Node.....	114
6.3.3.2 Frame Format of a Normal Response from a Slave Node.....	114
6.3.3.3 Frame Format of an Abnormal Response from a Slave Node.....	114
6.3.3.4 Examples.....	114
6.3.4 Writing a Single Register (0x06).....	116
6.3.4.1 Frame Format of a Request from a Master Node.....	116
6.3.4.2 Frame Format of a Normal Response from a Slave Node.....	116
6.3.4.3 Frame Format of an Abnormal Response from a Slave Node.....	116
6.3.4.4 Examples.....	117
6.3.5 Writing Multiple Registers (0x10).....	118
6.3.5.1 Frame Format of a Request from a Master Node.....	118
6.3.5.2 Frame Format of a Normal Response from a Slave Node.....	119
6.3.5.3 Frame Format of an Abnormal Response from a Slave Node.....	119
6.3.5.4 Examples.....	119
6.3.6 Reading Device Identifiers (0x2B).....	121
6.3.6.1 Command for Querying Device Identifiers.....	122
6.3.6.2 Command for Querying a Device List.....	123
6.3.6.3 Device Description Definition.....	124
6.3.7 Huawei-defined Functions (0x41).....	125
6.3.7.1 Uploading Files.....	125
6.3.7.1.1 Starting the Upload.....	126
6.3.7.1.2 Uploading Data.....	127
6.3.7.1.3 Completing the Data Upload.....	128
6.3.7.1.4 Timeout Processing.....	129

# 1 Supported Models

This chapter describes the solar inverter models that use the Modbus protocol and the earliest firmware version. When a host needs to connect to these solar inverters, ensure that the firmware version is correct.

## 1.1 Model Description

**Table 1-1** Supported models and firmware versions

Model	Model ID	Earliest Firm Version
SUN2000-2KTL-L0	338	SUN2000L V100R001C00
SUN2000-2KTL-L1	349	SUN2000L V200R001C00
SUN2000-3KTL-CNLO	334	SUN2000L V100R001C20
SUN2000-3KTL-L0	339	SUN2000L V100R001C00
SUN2000-3KTL-L1	348	SUN2000L V200R001C00
SUN2000-3KTL-M0	410	SUN2000MA V100R001C00
SUN2000-3KTL-M1	424	SUN2000MA V100R001C00
SUN2000-3.68KTL-L10	347	SUN2000L V200R001C0
SUN2000-3.8KTL-USLO	318	SUN2000L V100R001C10
SUN2000-3.8KTL-USLO	319	SUN2000L V100R001C10
SUN2000-4KTL-CNLO	335	SUN2000L V100R001C20
SUN2000-4KTL-L0	340	SUN2000L V100R001C00
SUN2000-4KTL-L1	346	SUN2000L V200R001C00
SUN2000-4KTL-M0	411	SUN2000MA V100R001C00
SUN2000-4KTL-M1	425	SUN2000MA V100R001C00

Model	Model ID	Earliest Firm Version
SUN2000-4.6KTL-L1	345	SUN2000L V200R001C00
SUN2000-4.95KTL-JPL0	342	SUN2000L V100R001C20
SUN2000-4.95KTL-JPL1	350	SUN2000L V200R001C00
SUN2000-4.95KTL-NHL2	351	SUN2000L V200R001C00
SUN2000-5KTL-CNL0	336	SUN2000L V100R001C20
SUN2000-5KTL-L0	341	SUN2000L V100R001C00
SUN2000-5KTL-L1	344	SUN2000L V200R001C00
SUN2000-5KTL-M0	400	SUN2000MA V100R001C00
SUN2000-5KTL-M0	401	SUN2000MA V100R001C00
SUN2000-5KTL-M1	426	SUN2000MA V100R001C00
SUN2000-5KTL-USL0	315	SUN2000L V100R001C10
SUN2000-5KTL-USL0	316	SUN2000L V100R001C10
SUN2000-6KTL-CNL0	337	SUN2000L V100R001C20
SUN2000-6KTL-L1	343	SUN2000L V200R001C00
SUN2000-6KTL-M0	402	SUN2000MA V100R001C00
SUN2000-6KTL-M0	403	SUN2000MA V100R001C00
SUN2000-6KTL-M1	427	SUN2000MA V100R001C00
SUN2000-7.6KTL-USL0	312	SUN2000L V100R001C10
SUN2000-7.6KTL-USL0	313	SUN2000L V100R001C10
SUN2000-8KTL	5	SUN2000 V100R001
SUN2000-8KTL	415	SUN2000MA V100R001C10
SUN2000-8KTL-M0	404	SUN2000MA V100R001C00
SUN2000-8KTL-M0	405	SUN2000MA V100R001C00
SUN2000-8KTL-M0	418	SUN2000MA V100R001C10
SUN2000-8KTL-M1	428	SUN2000MA V100R001C00
SUN2000-8KTL-M2	430	SUN2000MA V100R001C10
SUN2000-9KTL-USL0	324	SUN2000L V100R001C10
SUN2000-9KTL-USL0	325	SUN2000L V100R001C10
SUN2000-10KTL	4	SUN2000 V100R001
SUN2000-10KTL	416	SUN2000MA V100R001C10

Model	Model ID	Earliest Firm Version
SUN2000-10KTL-M0	406	SUN2000MA V100R001C00
SUN2000-10KTL-M0	407	SUN2000MA V100R001C00
SUN2000-10KTL-M0	419	SUN2000MA V100R001C10
SUN2000-10KTL-M1	429	SUN2000MA V100R001C00
SUN2000-10KTL-M2	431	SUN2000MA V100R001C10
SUN2000-10KTL-USL0	332	SUN2000L V100R001C10
SUN2000-10KTL-USL0	333	SUN2000L V100R001C10
SUN2000-11.4KTL-USL0	321	SUN2000L V100R001C10
SUN2000-11.4KTL-USL0	322	SUN2000L V100R001C10
SUN2000-12KTL	3	SUN2000 V100R001
SUN2000-12KTL	417	SUN2000MA V100R001C10
SUN2000-12KTL-M0	408	SUN2000MA V100R001C00
SUN2000-12KTL-M0	420	SUN2000MA V100R001C10
SUN2000-12KTL-M1	463	SUN2000MA V100R001C00
SUN2000-12KTL-M2	432	SUN2000MA V100R001C10
SUN2000-15KTL	2	SUN2000 V100R001
SUN2000-15KTL-M0	412	SUN2000MA V100R001C10
SUN2000-15KTL-M0	421	SUN2000MA V100R001C10
SUN2000-15KTL-M2	433	SUN2000MA V100R001C10
SUN2000-15KTL-M3	436	SUN2000MA V100R001C20
SUN2000-17KTL	1	SUN2000 V100R001
SUN2000-17KTL-M0	413	SUN2000MA V100R001C10
SUN2000-17KTL-M0	422	SUN2000MA V100R001C10
SUN2000-17KTL-M2	434	SUN2000MA V100R001C10
SUN2000-17KTL-M3	437	SUN2000MA V100R001C20
SUN2000-20KTL	0	SUN2000 V100R001
SUN2000-20KTL-M0	414	SUN2000MA V100R001C10SUN2000MA
SUN2000-20KTL-M0	423	SUN2000MA V100R001C10SUN2000MA
SUN2000-20KTL-M2	435	SUN2000MA V100R001C10
SUN2000-20KTL-M3	438	SUN2000MA V100R001C20



Model	Model ID	Earliest Firm Version
SUN2000-20KTL-M3	457	SUN2000MA V100R001C20
SUN2000-22KTL-US	25	SUN2000 V200R001C02
SUN2000-23KTL	17	SUN2000 V100R001
SUN2000-23KTL-M3	439	SUN2000MA V100R001C20
SUN2000-24.5KTL	16	SUN2000 V100R001
SUN2000-24.5KTL-M3	440	SUN2000MA V100R001C20
SUN2000-24.7KTL-JP	32	SUN2000 V200R002C00
SUN2000-25KTL-NAM3	441	SUN2000MA V100R001C20
SUN2000-25KTL-US	21	SUN2000 V200R001C02
SUN2000-28KTL	18	SUN2000 V100R001
SUN2000-28KTL-M3	442	SUN2000MA V100R001C20
SUN2000-29.9KTL	60	SUN2000 V200R002C00
SUN2000-29.9KTL-M3	443	SUN2000MA V100R001C20
SUN2000-29.9KTL-M3	458	SUN2000MA V100R001C20
SUN2000-30KTL-A	23	SUN2000 V200R001C90
SUN2000-30KTL-M3	444	SUN2000MA V100R001C20
SUN2000-30KTL-M3	459	SUN2000MA V100R001C20
SUN2000-30KTL-M3	462	SUN2000MA V100R001C20
SUN2000-30KTL-NAM3	450	SUN2000MA V100R001C20
SUN2000-30KTL-US	22	SUN2000 V200R001C02
SUN2000-33KTL	19	SUN2000 V200R001C90
SUN2000-33KTL-A	43	SUN2000 V200R002C00
SUN2000-33KTL-E001	44	SUN2000 V200R001C90
SUN2000-33KTL-JP	28	SUN2000 V200R002C00
SUN2000-33KTL-NAM3	451	SUN2000MA V100R001C20
SUN2000-33KTL-NH	468	SUN2000MA V100R001C20
SUN2000-33KTL-NHM3	455	SUN2000MA V100R001C20
SUN2000-33KTL-US	36	SUN2000 V200R002C20
SUN2000-36KTL	27	SUN2000 V200R002C00
SUN2000-36KTL-M3	445	SUN2000MA V100R001C20

Model	Model ID	Earliest Firm Version
SUN2000-36KTL-M3	460	SUN2000MA V100R001C20
SUN2000-36KTL-NAM3	452	SUN2000MA V100R001C20
SUN2000-36KTL-US	37	SUN2000 V200R002C20
SUN2000-40KTL	20	SUN2000 V200R001C90
SUN2000-40KTL-JP	29	SUN2000 V200R002C00
SUN2000-40KTL-M3	446	SUN2000MA V100R001C20
SUN2000-40KTL-M3	461	SUN2000MA V100R001C20
SUN2000-40KTL-NAM3	453	SUN2000MA V100R001C20
SUN2000-40KTL-NH	469	SUN2000MA V100R001C20
SUN2000-40KTL-NHM3	456	SUN2000MA V100R001C20
SUN2000-40KTL-US	35	SUN2000 V200R002C20
SUN2000-42KTL	26	SUN2000 V200R002C00
SUN2000-42KTL-M3	447	SUN2000MA V100R001C20
SUN2000-43KTL-IN-C1	31	SUN2000 V200R002C00
SUN2000-43KTL-INM3	454	SUN2000MA V100R001C20
SUN2000-44KTL-M3	448	SUN2000MA V100R001C20
SUN2000-45KTL-US-HV-D0	34	SUN2000HA V100R001
SUN2000-50KTL	30	SUN2000 V200R002C00
SUN2000-50KTL-C1	24	SUN2000 V200R002C00
SUN2000-50KTL-JPM0	53	SUN2000 V300R001C00
SUN2000-50KTL-JPM1	59	SUN2000 V300R001C00
SUN2000-50KTL-M0	50	SUN2000 V300R001C00
SUN2000-50KTL-M3	449	SUN2000MA V100R001C20
SUN2000-55KTL-HV-D1	38	SUN2000HA V100R001
SUN2000-55KTL-HV-D1-001	40	SUN2000HA V100R001
SUN2000-55KTL-IN-HV-D1	39	SUN2000HA V100R001
SUN2000-60KTL-HV-D1	33	SUN2000HA V100R001
SUN2000-60KTL-HV-D1-001	41	SUN2000HA V100R001
SUN2000-60KTL-M0	55	SUN2000 V300R001C00
SUN2000-63KTL-JPH0	76	SUN2000HA V200R001C00

Model	Model ID	Earliest Firm Version
SUN2000-63KTL-JPM0	51	SUN2000 V300R001C00
SUN2000-65KTL-M0	46	SUN2000 V300R001C00
SUN2000-70KTL-C1	45	SUN2000 V300R001C00
SUN2000-70KTL-INM0	48	SUN2000 V300R001C00
SUN2000-75KTL-C1	56	SUN2000 V300R001C00
SUN2000-90KTL-H0	75	SUN2000HA V200R001C00
SUN2000-90KTL-H1	73	SUN2000HA V200R001C00
SUN2000-90KTL-H2	81	SUN2000HA V200R001C00
SUN2000-95KTL-INH0	74	SUN2000HA V200R001C00
SUN2000-95KTL-INH1	82	SUN2000HA V200R001C00
SUN2000-100KTL-H0	72	SUN2000HA V200R001C00
SUN2000-100KTL-H1	71	SUN2000HA V200R001C00
SUN2000-100KTL-H2	78	SUN2000HA V200R001C00
SUN2000-100KTL-INM0	143	SUN2000 V500R001C00
SUN2000-100KTL-M0	141	SUN2000 V500R001C00
SUN2000-100KTL-M1	142	SUN2000 V500R001C00
SUN2000-100KTL-USH0	70	SUN2000HA V200R001C00
SUN2000-105KTL-H1	79	SUN2000HA V200R001C00
SUN2000-110KTL-M0	144	SUN2000 V500R001C00
SUN2000-111KTL-NHM0	146	SUN2000 V500R001C00
SUN2000-125KTL-JPH0	110	SUN2000HA V300R001C00
SUN2000-125KTL-M0	145	SUN2000 V500R001C00
SUN2000-168KTL-H1	103	SUN2000HA V300R001C00
SUN2000-175KTL-H0	101	SUN2000HA V300R001C00
SUN2000-185KTL-H1	104	SUN2000HA V300R001C00
SUN2000-185KTL-INH0	102	SUN2000HA V300R001C00
SUN2000-193KTL-H0	105	SUN2000HA V300R001C00
SUN2000-196KTL-H0	106	SUN2000HA V300R001C00
SUN2000-196KTL-H1	107	SUN2000HA V300R001C00
SUN2000-196KTL-H3	111	SUN2000HA V300R001C00

Model	Model ID	Earliest Firm Version
SUN2000-200KTL-H2	108	SUN2000HA V300R001C00
SUN2000-215KTL-H0	109	SUN2000HA V300R001C00
SUN2000L-2KTL	305	SUN2000L V100R001C00
SUN2000L-3KTL	304	SUN2000L V100R001C00
SUN2000L-3KTL-CN	310	SUN2000L V100R001C00
SUN2000L-3KTL-CN-4G	311	SUN2000L V100R001C00
SUN2000L-3.68KTL	303	SUN2000L V100R001C00
SUN2000L-4KTL	302	SUN2000L V100R001C00
SUN2000L-4KTL-CN	308	SUN2000L V100R001C00
SUN2000L-4KTL-CN-4G	309	SUN2000L V100R001C00
SUN2000L-4.125KTL-JP	331	SUN2000L V100R001C12
SUN2000L-4.6KTL	301	SUN2000L V100R001C00
SUN2000L-4.95KTL-JP	330	SUN2000L V100R001C12
SUN2000L-5KTL	300	SUN2000L V100R001C00
SUN2000L-5KTL-CN	306	SUN2000L V100R001C00
SUN2000L-5KTL-CN-4G	307	SUN2000L V100R001C00
SUN8000-500KTL	9	SUN8000 V100R001

**NOTE**

The maximum active power ( $P_{max}$ ), maximum reactive power ( $Q_{max}$ ), and rated power ( $P_n$ ) corresponding to each model can be obtained from the register interface. The model ID is the unique code of the model.

# 2 Overview

Modbus is a widely used protocol for device communications. This document describes the Modbus protocol used by Huawei solar inverters, and can be used to regulate follow-up third-party integrated development. Huawei solar inverters comply with the standard Modbus protocol, and this document focuses on the information specific to Huawei solar inverters. For other information about Modbus, see the standard documents about the Modbus protocol. For details about the standard protocols used by Huawei solar inverters and customized interaction modes and examples, see chapter 6.

## 2.1 Terms and Abbreviations

Table 2-1 Terms and abbreviations

Name	Description
Master node	During master-slave communication, the party that initiates a communication request is referred to as the master node.
Slave node	During master-slave communication, the party that responds to a communication request is referred to as the slave node.
Broadcast address	Fixed to 0.
Register address	A register address is recorded in two bytes.
U16	Unsigned integer (16 bits)
U32	Unsigned integer (32 bits)
I16	Signed integer (16 bits)
I32	Signed integer (32 bits)
STR	Character string
MLD	Multiple bytes
Bitfield16	16-bit data expressed by bit

Name	Description
Bitfield32	32-bit data expressed by bit
N/A	Not applicable
s	Second
Epoch seconds	The number of seconds that have elapsed since 1970-01-01 00:00:00
RO	Data that is readable only
RW	Data that is readable and writable
WO	Data that is writable only

# 3 Register Definitions

## 3.1 Inverter Equipment Register

**Table 3-1** Inverter Equipment Register definitions

No.	Signal Name	Read/Write	Type	Unit	Gain	Address	Quantity	Scope
1	Model	RO	STR	N/A	N/A	30000	15	For details, see <a href="#">.1.1 Model Description</a>
2	SN	RO	STR	N/A	N/A	30015	10	N/A
3	PN	RO	STR	N/A	N/A	30025	10	N/A
4	Model ID	RO	U16	N/A	N/A	30070	1	For details, see <a href="#">1.1 Model Description</a> .
5	Number of PV strings	RO	U16	N/A	1	30071	1	N/A
6	Number of MPP trackers	RO	U16	N/A	1	30072	1	N/A
7	Rated power ( $P_n$ )	RO	U32	kW	1000	30073	2	N/A
8	Maximum active power ( $P_{max}$ )	RO	U32	kW	1000	30075	2	N/A
9	Maximum apparent power ( $S_{max}$ )	RO	U32	kVA	1000	30077	2	N/A

No.	Signal Name	Read/Write	Type	Unit	Gain	Address	Quantity	Scope
10	Maximum reactive power ( $Q_{max}$ , fed to the power grid)	RO	I32	kVar	1000	30079	2	N/A
11	Maximum reactive power ( $Q_{max}$ , absorbed from the power grid)	RO	I32	kVar	1000	30081	2	N/A
12	Offering name of southbound device 1	RO	String	N/A	N/A	30561	15	N/A
13	Offering name of southbound device 2	RO	String	N/A	N/A	30576	15	N/A
14	Offering name of southbound device 3	RO	String	N/A	N/A	30591	15	N/A
15	Hardware version	RO	String	N/A	1	31000	15	
16	Monitoring board SN	RO	String	N/A	N/A	31015	10	N/A
17	Monitoring software version	RO	String	N/A	N/A	31025	15	N/A
18	Master DSP version	RO	String	N/A	N/A	31040	15	N/A
19	CPLD version	RO	String	N/A	N/A	31070	15	N/A
20	AFCI version	RO	String	N/A	N/A	31085	15	N/A
21	DC-MBUS version	RO	String	N/A	N/A	31115	15	N/A
22	REGKEY	RO	String	N/A	1	31200	10	



No.	Signal Name	Read/Write	Type	Unit	Gain	Address	Quantity	Scope
23	[Remote communication] Single-machine remote communication	RO	Bitfield16	N/A	N/A	32000	1	Bit 0: standby Bit 1: grid-connected Bit 2: grid-connected normally Bit 3: grid connection with derating due to power rationing Bit 4: grid connection with derating due to internal causes of the solar inverter Bit 5: normal stop Bit 6: stop due to faults Bit 7: stop due to power rationing Bit 8: shutdown Bit 9: spot check Bit 10: Off-grid operation Bit 11: Hot Standby Operation
24	[Remote communication] Running status (monitoring processing)	RO	Bitfield16	N/A	N/A	32002	1	Bit 0: locking status (0: locked; 1: unlocked) Bit 1: PV connection status (0: disconnected; 1: connected) Bit 2: DSP data collection (0: no; 1: yes)

No.	Signal Name	Read/Write	Type	Unit	Gain	Address	Quantity	Scope
25	[Remote communication] Running status (power processing)	RO	Bitfield32	N/A	N/A	32003	2	Bit 0: off-grid (0: on-grid; 1: off-grid) Bit 1: off-grid switch (0: disable; 1: enable) Bit2: DC switch (0: OFF, 1: ON) Bit3: On-grid operation (0: off-grid operation, 1: on-grid operation) Bit4: Off-grid operation (0: offline and not running; 1: offline and running) Bit5: Standby (0: non-standby; 1: standby)
26	Alarm 1	RO	Bitfield16	N/A	N/A	32008	1	For details, see <a href="#">5.1 Alarm Information</a> .
27	Alarm 2	RO	Bitfield16	N/A	N/A	32009	1	For details, see <a href="#">5.1 Alarm Information</a> .
28	Alarm 3	RO	Bitfield16	N/A	N/A	32010	1	For details, see <a href="#">5.1 Alarm Information</a> .
29	ESN	RO	UINT16	N/A	N/A	32015	1	N/A

No.	Signal Name	Read/Write	Type	Unit	Gain	Address	Quantity	Scope
30	PV1 voltage	RO	I16	V	10	32016	1	A maximum of 24 PV strings are supported. The number of PV strings read by the host is defined by the <b>Number of PV strings</b> signal. The voltage and current register addresses for each PV string are as follows: PV $n$ voltage: $32014 + 2n$ PV $n$ current: $32015 + 2n$ $n$ indicates the PV string number, which ranges from 1 to 24.
31	PV1 current	RO	I16	A	100	32017	1	
32	PV2 voltage	RO	I16	V	10	32018	1	
33	PV2 current	RO	I16	A	100	32019	1	
34	PV3 voltage	RO	I16	V	10	32020	1	
35	PV3 current	RO	I16	A	100	32021	1	
36	PV4 voltage	RO	I16	V	10	32022	1	
37	PV4 current	RO	I16	A	100	32023	1	
38	Input power	RO	I32	kW	1000	32064	2	N/A
39	Power grid voltage/Line voltage between phases A and B	RO	U16	V	10	32066	1	When the output mode is L/N, L1/L2/N, or L1/L2, <b>Power grid voltage</b> is used.
40	Line voltage between phases B and C	RO	U16	V	10	32067	1	When the output mode is L/N, L1/L2/N, or L1/L2, the information is invalid.
41	Line voltage between phases C and A	RO	U16	V	10	32068	1	When the output mode is L/N, L1/L2/N, or L1/L2, the information is invalid.

No.	Signal Name	Read/Write	Type	Unit	Gain	Address	Quantity	Scope
42	Phase A voltage	RO	U16	V	10	32069	1	When the output mode is L/N, L1/L2/N, or L1/L2, the information is invalid.
43	Phase B voltage	RO	U16	V	10	32070	1	When the output mode is L/N, L1/L2/N, or L1/L2, the information is invalid.
44	Phase C voltage	RO	U16	V	10	32071	1	When the output mode is L/N, L1/L2/N, or L1/L2, the information is invalid.
45	Power grid current/ Phase A current	RO	I32	A	1000	32072	2	When the output mode is L/N, L1/L2/N, or L1/L2, <b>Power grid current</b> is used.
46	Phase B current	RO	I32	A	1000	32074	2	When the output mode is L/N, L1/L2/N, or L1/L2, the information is invalid.
47	Phase C current	RO	I32	A	1000	32076	2	When the output mode is L/N, L1/L2/N, or L1/L2, the information is invalid.
48	Peak active power of current day	RO	I32	kW	1000	32078	2	N/A
49	Active power	RO	I32	kW	1000	32080	2	N/A
50	Reactive power	RO	I32	kVar	1000	32082	2	N/A
51	Power factor	RO	I16	N/A	1000	32084	1	N/A

No.	Signal Name	Read/Write	Type	Unit	Gain	Address	Quantity	Scope
52	Grid frequency	RO	U16	Hz	100	32085	1	N/A
53	Efficiency	RO	U16	%	100	32086	1	N/A
54	Internal temperature	RO	I16	°C	10	32087	1	N/A
55	Insulation resistance	RO	U16	MΩ	1000	32088	1	N/A

No.	Signal Name	Read/Write	Type	Unit	Gain	Address	Quantity	Scope
56	Device status	RO	ENUM16	N/A	N/A	32089	1	0x0000 Standby: initializing 0x0001 Standby: detecting insulation resistance 0x0002 Standby: detecting irradiation 0x0003 Standby: drid detecting 0x0100 Starting 0x0200 On-grid (Off-grid mode: running) 0x0201 Grid connection: power limited (Off-grid mode: running: power limited) 0x0202 Grid connection: self-derating (Off-grid mode: running: self-derating) 0x0203 Off-grid Running 0x0300 Shutdown: fault 0x0301 Shutdown: command 0x0302 Shutdown: OVGR 0x0303 Shutdown: communication disconnected

No.	Signal Name	Read/Write	Type	Unit	Gain	Address	Quantity	Scope
								0x0304 Shutdown: power limited 0x0305 Shutdown: manual startup required 0x0306 Shutdown: DC switches disconnected 0x0307 Shutdown: rapid cutoff 0x0308 Shutdown: input underpower 0x0401 Grid scheduling: cosφ-P curve 0x0402 Grid scheduling: Q-U curve 0x0403 Grid scheduling: PF- U curve 0x0404 Grid scheduling: dry contact 0x0405 Grid scheduling: Q-P curve 0x0500 Spot- check ready 0x0501 Spot- checking 0x0600 Inspecting 0x0700 AFCI self check 0x0800 I-V scanning 0x0900 DC input detection

No.	Signal Name	Read/Write	Type	Unit	Gain	Address	Quantity	Scope
								0X0A00 Running: off-grid charging 0xA000 Standby: no irradiation
57	Fault code	RO	U16	N/A	N/A	32090	1	N/A
58	Startup time	RO	EPOCH TIME	s	1	32091	2	Epoch seconds, local time
59	Shutdown time	RO	EPOCH TIME	s	1	32093	2	Epoch seconds, local time
60	Accumulated energy yield	RO	U32	kWh	100	32106	2	N/A
61	Daily energy yield	RO	U32	kWh	100	32114	2	N/A
62	[Management system] Management system status	RO	UINT16	N/A	1	35127	1	
63	[Smart I-V Curve Diagnosis] Authorization function	RO	DBitfield 32	N/A	1	35136	2	Bit 0: Smart I-V Curve Diagnosis
64	[Smart I-V Curve Diagnosis] License status	RO	ENUM16	N/A	N/A	35138	1	0: No license 1: Normal 2: In grace period 3: Revoked 4: SN not match 5: Expired
65	[Smart I-V Curve Diagnosis] License expiration time	RO	EPOCH TIME	s	1	35139	2	N/A



No.	Signal Name	Read/Write	Type	Unit	Gain	Address	Quantity	Scope
66	License loading time	RO	EPOCHTIME	s	1	35141	2	N/A
67	License revocation time	RO	EPOCHTIME	s	1	35143	2	N/A
68	License SN	RO	String	N/A	1	35145	10	
69	Revocation code	RO	String	N/A	1	35155	64	
70	[4G] Module status	RO	ENUM16	N/A	N/A	35249	1	0: Card not found 1: Card registration failed 2: No connection 3: Low signal strength 4: Medium signal strength 5: High signal strength 0x6: Connected 0x100: Card in position 0x101: PIN required 0x102: PUK required 0xFFFF: Module not found
71	[4G] IP address	RO	UINT32	N/A	1	35250	2	
72	[4G] Subnet mask	RO	UINT32	N/A	1	35252	2	
73	[4G] IMEI	RO	String	N/A	1	35254	10	
74	[4G] Signal strength	RO	UINT16	N/A	1	35264	1	[0,5]

No.	Signal Name	Read/Write	Type	Unit	Gain	Address	Quantity	Scope
75	[4G] Maximum number of PIN attempts	RO	UINT16	N/A	1	35265	1	
76	[4G] PIN verification status	RO	ENUM16	N/A	N/A	35266	1	0: Initial state 1: Verifying...
77	Original model name	RO	MLD/Bytes	N/A	1	35268	15	
78	[Active] Adjustment mode	RO	MLD/Bytes	N/A	N/A	35300	4	0: percentage 1: fixed value
79	[Reactive] Adjustment mode	RO	MLD/Bytes	N/A	N/A	35304	4	0: power factor 1: absolute value 2: Q/S 3: Q-U characteristic curve (command ID: 0) 4: $\cos\phi$ -P/P <sub>n</sub> characteristic curve (command ID: 0) 5: PF-U characteristic curve (command ID: 0) 6: Q-P characteristic curve (command ID: 0)

No.	Signal Name	Read/Write	Type	Unit	Gain	Address	Quantity	Scope
80	[System level] Charge/ Discharge mode	RO	ENUM16	N/A	N/A	37006	1	0: N/A 1: Forced charge/ discharge 2: Time-of-use 3: Fixed charge and discharge 4: Max. self- consumption 5: Fully fed to grid 6: TOU 7: Remote scheduling- Max. self- consumption 8: Remote scheduling- Fully fed to grid 9: Remote scheduling- TOU 10: AI control 11: Remote scheduling-AI control 12: Three-party scheduling
81	[Power meter collection] Active power*	RO	I32	W	1	37113	2	> 0: feeding power to the power grid < 0: obtaining power from the power grid
82	[Optimizer] Total number of optimizers*	RO	U16	N/A	1	37200	1	N/A
83	[Optimizer] Number of online optimizers*	RO	U16	N/A	1	37201	1	N/A

No.	Signal Name	Read/Write	Type	Unit	Gain	Address	Quantity	Scope
84	[Optimizer] Feature data*	RO	U16	N/A	1	37202	1	N/A
85	System time	RW	EPOCH TIME	s	1	40000	2	[2000-1-1 00:00:00, 2068-12-31 23:59:59] Epoch seconds, local time
86	[Power grid scheduling] Q-U characteristic curve mode*	RW	ENUM16	N/A	N/A	40037	1	0: non-hysteresis 1: hysteresis
87	[Power grid scheduling] Q-U dispatch trigger power (%)*	RW	I16	%	1	40038	1	[-100, 100]
88	[Power grid scheduling] Fixed active power derated	RW	U16	kW	10	40120	1	Scope: [0, P <sub>max</sub> ]
89	power factor	RW	I16	N/A	1000	40122	1	(-1, -0.8]U[0.8, 1]
90	[Power grid scheduling] Reactive power compensation (Q/S)	RW	I16	N/A	1000	40123	1	[-1, 1] The device converts the value to a fixed value of Q for reactive power control. S indicates S <sub>max</sub> .
91	[Power grid scheduling] Active power percentage derating (0.1%)	RW	I16	%	10	40125	1	Scope: [0, 100] Interface for fine adjustment of active power

No.	Signal Name	Read/Write	Type	Unit	Gain	Address	Quantity	Scope
92	[Power grid scheduling] Fixed active power derated (W)	RW	U32	W	1	40126	2	Scope: [0, P <sub>max</sub> ]
93	[Power grid scheduling] Reactive power compensation at night (kVar)	RW	I32	kVar	1000	40129	2	[-Q <sub>max</sub> , Q <sub>max</sub> ]
94	[Power grid scheduling] cosφ-P/P <sub>n</sub> characteristic curve	RW	MLD/Bytes	N/A	N/A	40133	21	For details, see <a href="#">5.2 Power Grid Scheduling</a> .
95	[Power grid scheduling] Q-U characteristic curve	RW	MLD/Bytes	N/A	N/A	40154	21	For details, see <a href="#">5.2 Power Grid Scheduling</a> .
96	[Power grid scheduling] PF-U characteristic curve	RW	MLD/Bytes	N/A	N/A	40175	21	For details, see <a href="#">5.2 Power Grid Scheduling</a> .
97	[Power grid scheduling] Reactive power adjustment time	RW	U16	s	1	40196	1	[1, 1000]. The default value is 10.
98	[Power grid scheduling] Q-U power percentage to exit scheduling*	RW	I16	%	1	40198	1	[0, 100]
99	Startup	WO	ENUM16	N/A	N/A	40200	1	0: startup
100	Shutdown	WO	ENUM16	N/A	N/A	40201	1	0: shutdown

No.	Signal Name	Read/Write	Type	Unit	Gain	Address	Quantity	Scope
101	Grid code	RW	U16	NA	NA	42000	1	For details, see <a href="#">5.3 Grid Codes</a> .
102	[Power grid scheduling] Reactive power change gradient	RW	U32	%/s	1000	42015	2	[0.1, 5000]
103	[Power grid scheduling] Active power change gradient	RW	U32	%/s	1000	42017	2	[0.1, 5000]
104	[Power grid scheduling] Schedule instruction valid duration	RW	U32	s	1	42019	2	[0, 86400] The value 0 indicates that the command is valid permanently.
105	Failsafe Active Power Limit [kW] [High Accuracy]	RW	I32	kW	1000	42405	2	[0.000,Pmax]
106	Time zone	RW	I16	min	1	43006	1	[-720, 840]
107	[Management system] TLS encryption	RW	ENUM16	N/A	N/A	43098	1	0: Disabled 1: Enabled
108	WLAN wakeup	RW	ENUM16	N/A	N/A	45052	1	0: Waken up 1: Disabled
109	Fast power scheduling	RW	ENUM16	N/A	N/A	45086	1	0: Disable 1: Enable

No.	Signal Name	Read/Write	Type	Unit	Gain	Address	Quantity	Scope
110	[Inverter level] Remote charge/discharge control mode	RW	ENUM16	N/A	N/A	47589	1	0: Local control 1: Remote control–Max. self-consumption 2: Remote control–Fully fed to grid 3: Remote control–TOU 4: Remote control–AI control 5: Remote Control - Three-party Scheduling
111	Scheduled task	RW	ENUM16	N/A	N/A	47674	1	0: Disable 1: Enable
112	Default maximum feed-in power	RW	INT32	kW	1000	47675	2	[-1000, plant capacity]
112	Default active power change gradient	RW	UINT32	%/s	1000	47677	2	[0.100, 5000.000]
114	Peak Shaving	RW	ENUM16	N/A	N/A	47954	1	0: Disabled 1: Active power limit 2: Apparent power limit (not supported in the single-device scenario)
115	Backup power SOC for peak shaving	RW	UINT16	%	10	47955	1	[0.0, 100.0]
116	Peak power	RW	BYTES	N/A	N/A	47956	64	
117	AI optical storage	RW	UINT16	N/A	N/A	48020	1	0: Disabled 1: Enabled

No.	Signal Name	Read/Write	Type	Unit	Gain	Address	Quantity	Scope
118	Backup Box model	RW	ENUM16	N/A	N/A	48089	1	0: Backup Box-B0/B1 1: Compatible Third Party Backup Box 2: SmartGuard 3: No Backup Box
119	Phase-to-ground short-circuit protection	RW	ENUM16	N/A	N/A	48090	1	0: Disabled 1: Enabled

**NOTICE**

Signals marked with \* are supported only by certain models or standard codes.

## 3.2 Battery Equipment Registe

Table 3-2 Battery Equipment Registe definitions

No.	Signal Name	Read/Write	Type	Unit	Gain	Address	Quantity	Scope	HUAWEI-LUNA2000	LG-RESU
1	[Energy storage unit 1] [1] Running status	RO	UINT16	N/A	1	37000	1	0: offline 1: standby 2: running 3: fault 4: sleep mode	√	(√) [2]



No.	Signal Name	Read/Write	Type	Unit	Gain	Address	Quantity	Scope	HUAWEI-LUNA2000	LG-RESU
2	[Energy storage unit 1] Charge and discharge power	RO	INT32	W	1	37001	2	> 0: charging < 0: discharging	√	(√)
3	[Energy storage unit 1] Bus voltage	RO	UINT16	V	10	37003	1	Energy storage module output voltage	√	(√)
4	[Energy storage unit 1] Battery SOC	RO	UINT16	%	10	37004	1	Battery's state of capacity	√	(√)

No.	Signal Name	Read/Write	Type	Unit	Gain	Address	Quantity	Scope	HUAWEI-LUNA2000	LG-RESU
5	[Energy storage unit 1] Working mode	RO	UINT16	N/A	1	37006	1	0:none 1:Forcible charge/discharge 2:Time of Use(LG) 3:Fixed charge/discharge 4:Maximise self consumption 5:Fully fed to grid 6:Time of Use(LUNA2000) 7:remote scheduling-maximum self-use 8:remote scheduling	√	√

No.	Signal Name	Read/Write	Type	Unit	Gain	Address	Quantity	Scope	HUAWEI-LUNA2000	LG-RESU
								- full Internet access 9: remote scheduling - TOU 10: AI energy management and scheduling		
6	[Energy storage unit 1] Rated charge power	RO	UINT32	W	1	37007	2	-	√	√
7	[Energy storage unit 1] Rated discharge power	RO	UINT32	W	1	37009	2	-	√	√
8	[Energy storage unit 1] Fault ID	RO	UINT16	N/A	1	37014	1	-	√	√

No.	Signal Name	Read/Write	Type	Unit	Gain	Address	Quantity	Scope	HUAWEI-LUNA2000	LG-RESU
9	[Energy storage unit 1] Current-day charge capacity	RO	UINT32	kWh	100	37015	2	-	√	(√)
10	[Energy storage unit 1] Current-day discharge capacity	RO	UINT32	kWh	100	37017	2	-	√	(√)
11	[Energy storage unit 1] Bus current	RO	INT16	A	10	37021	1	Energy storage module output current	√	√
12	[Energy storage unit 1] battery temperature	RO	INT16	°C	10	37022	1	-	√	√

No.	Signal Name	Read/Write	Type	Unit	Gain	Address	Quantity	Scope	HUAWEI-LUNA2000	LG-RESU
13	[Energy storage unit 1] Remaining charge / discharge time	RO	UINT16	mins	1	37025	1	[0,1440]	√	√
14	[Energy storage unit 1] DCDC version	RO	STRING	N/A	1	37026	10	eg. 7kW-V1.3		√
15	[Energy storage unit 1] BMS version	RO	STRING	N/A	1	37036	10	eg. 001. 002. 003. 004		√

No.	Signal Name	Read/Write	Type	Unit	Gain	Address	Quantity	Scope	HUAWEI-LUNA2000	LG-RESU
16	[Energy storage]Maximum charge power	RO	UINT32	W	1	37046	2	The value is the smaller value of the sum of the maximum charge and discharge capability of the solar inverter and the charge and discharge capability of the connected energy storage unit (ESU).	√	√

No.	Signal Name	Read/Write	Type	Unit	Gain	Address	Quantity	Scope	HUAWEI-LUNA2000	LG-RESU
17	[Energy storage] Maximum discharge power	RO	UINT32	W	1	37048	2	The value is the smaller value of the sum of the maximum charge and discharge capability of the solar inverter and the charge and discharge capability of the connected ESU.	√	√
18	[Energy storage unit 1] SN	RO	STRING	N/A	1	37052	10	-	√	√
19	[Energy storage unit 1] Total charge	RO	UINT32	kWh	100	37066	2	-	√	√

No.	Signal Name	Read/Write	Type	Unit	Gain	Address	Quantity	Scope	HUAWEI-LUNA2000	LG-RESU
20	[Energy storage unit 1] Total discharge	RO	UINT32	kWh	100	37068	2	-	√	√
21	[Energy storage unit 2] SN	RO	BYTES	N/A	1	37700	10	-	√	
22	[Energy storage unit 2] Battery SOC	RO	UINT16	%	10	37738	1	Battery's state of capacity	√	
23	[Energy storage unit 2] Running status	RO	UINT16	N/A	1	37741	1	0: offline 1: standby 2: running 3: fault 4: sleep mode	√	
24	[Energy storage unit 2] Charge and discharge power	RO	INT32	W	1	37743	2	> 0: charging < 0: discharging	√	



No.	Signal Name	Read/Write	Type	Unit	Gain	Address	Quantity	Scope	HUAWEI-LUNA2000	LG-RESU
25	[Energy storage unit 2] Current-day charge capacity	RO	UIN T32	kWh	100	37746	2	-	√	
26	[Energy storage unit 2] Current-day discharge capacity	RO	UIN T32	kWh	100	37748	2	-	√	
27	[Energy storage unit 2] Bus voltage	RO	UIN T16	V	10	37750	1	-	√	
28	[Energy storage unit 2] Bus current	RO	INT16	A	10	37751	1	-	√	
29	[Energy storage unit 2] Battery temperature	RO	INT16	°C	10	37752	1		√	

No.	Signal Name	Read/Write	Type	Unit	Gain	Address	Quantity	Scope	HUAWEI-LUNA2000	LG-RESU
30	[Energy storage unit 2] Total charge	RO	UINT32	kWh	100	37753	2	-	√	
31	[Energy storage unit 2] Total discharge	RO	UINT32	kWh	100	37755	2	-	√	
32	[Energy storage] Rated capacity	RO	UINT32	Wh	1	37758	2		√	
33	[Energy storage]SOC	RO	UINT16	%	10	37760	1	[0.0,100.0]	√	
34	[Energy storage]Running status	RO	UINT16	N/A	1	37762	1	0: offline 1: standby 2: running 3: fault 4: sleep mode	√	

No.	Signal Name	Read/Write	Type	Unit	Gain	Address	Quantity	Scope	HUAWEI-LUNA2000	LG-RESU
35	[Energy storage]Bus voltage	RO	UINT16	V	10	37763	1	-	√	
36	[Energy storage]Bus current	RO	INT16	A	10	37764	1	-	√	
37	[Energy storage]Charge/Discharge power	RO	INT32	W	1	37765	2	-	√	
38	[Energy storage]Total charge	RO	UINT32	kWh	100	37780	2	Life-cycle accumulation	√	√
39	[Energy storage]Total discharge	RO	UINT32	kWh	100	37782	2	Life-cycle accumulation	√	√
40	[Energy storage]Current-day charge capacity	RO	UINT32	kWh	100	37784	2	Current-day accumulation	√	√

No.	Signal Name	Read/Write	Type	Unit	Gain	Address	Quantity	Scope	HUAWEI-LUNA2000	LG-RESU
41	[Energy storage] Current-day discharge capacity	RO	UINT32	kWh	100	37786	2	Current-day accumulation	√	√
42	[Energy storage unit 2] software version	RO	STRING	N/A	1	37799	15	-	√	
43	[Energy storage unit 1] software version	RO	STRING	N/A	1	37814	15	-	√	
44	[Energy storage unit 1] [Battery pack1] SOH Calibration Status	RO	UINT16	N/A	N/A	37920	1			

No.	Signal Name	Read/Write	Type	Unit	Gain	Address	Quantity	Scope	HUAWEI-LUNA2000	LG-RESU
45	[Energy storage unit 1] [Battery pack2] ]SOH Calibration Status	RO	UINT16	N/A	N/A	37921	1			
46	[Energy storage unit 1] [Battery pack3] ]SOH Calibration Status	RO	UINT16	N/A	N/A	37922	1			
47	[Energy storage unit 2] [Battery pack1] ]SOH Calibration Status	RO	UINT16	N/A	N/A	37923	1			

No.	Signal Name	Read/Write	Type	Unit	Gain	Address	Quantity	Scope	HUAWEI-LUNA2000	LG-RESU
48	[Energy storage unit 2] [Battery pack2] SOH Calibration Status	RO	UINT16	N/A	N/A	37924	1			
49	[Energy storage unit 2] [Battery pack3] SOH Calibration Status	RO	UINT16	N/A	N/A	37925	1			
50	SOH Calibration Status	RO	UINT16	N/A	1	37926	1			
51	SOH Calibration Release the lower discharge limit of the SOC	RO	UINT16	N/A	10	37927	1			

No.	Signal Name	Read/Write	Type	Unit	Gain	Address	Quantity	Scope	HUAWEI-LUNA2000	LG-RESU
52	SOH Calibration Enable the backup power SOC.	RO	UINT16	N/A	10	37928	1			
53	[Energy storage unit 1] [Battery pack1] ]SN	RO	STRING	N/A	N/A	38200	10	-	√	
54	[Energy storage unit 1] [Battery pack1] ]Firmware version	RO	STRING	N/A	N/A	38210	15	-	√	
55	[Energy storage unit 1] [Battery pack1] ]Working status	RO	UINT16	N/A	N/A	38228	1	-	√	

No.	Signal Name	Read/Write	Type	Unit	Gain	Address	Quantity	Scope	HUAWEI-LUNA2000	LG-RESU
56	[Energy storage unit 1] [Battery pack1] [SOC]	RO	UINT16	%	10	38229	1	-	√	
57	[Energy storage unit 1] [Battery pack1] [Charge/Discharge power]	RO	INT32	kW	1000	38233	2	-	√	
58	[Energy storage unit 1] [Battery pack1] [Voltage]	RO	UINT16	V	10	38235	1	-	√	
59	[Energy storage unit 1] [Battery pack1] [Current]	RO	INT16	A	10	38236	1	-	√	



No.	Signal Name	Read/Write	Type	Unit	Gain	Address	Quantity	Scope	HUAWEI-LUNA2000	LG-RESU
60	[Energy storage unit 1] [Battery pack1] ]Total charge	RO	UINT32	kWh	100	38238	2	-	√	
61	[Energy storage unit 1] [Battery pack1] ]Total discharge	RO	UINT32	kWh	100	38240	2	-	√	
62	[Energy storage unit 1] [Battery pack2] ]SN	RO	STRING	N/A	N/A	38242	10	-	√	
63	[Energy storage unit 1] [Battery pack2] ]Firmware version	RO	STRING	N/A	N/A	38252	15	-	√	

No.	Signal Name	Read/Write	Type	Unit	Gain	Address	Quantity	Scope	HUAWEI-LUNA2000	LG-RESU
64	[Energy storage unit 1] [Battery pack2] Working status	RO	UINT16	N/A	N/A	38270	1	-	√	
65	[Energy storage unit 1] [Battery pack2] SOC	RO	UINT16	%	10	38271	1	-	√	
66	[Energy storage unit 1] [Battery pack2] Charge/Discharge power	RO	INT32	kW	1000	38275	2	-	√	
67	[Energy storage unit 1] [Battery pack2] Voltage	RO	UINT16	V	10	38277	1	-	√	

No.	Signal Name	Read/Write	Type	Unit	Gain	Address	Quantity	Scope	HUAWEI-LUNA2000	LG-RESU
68	[Energy storage unit 1] [Battery pack2] ]Current	RO	INT16	A	10	38278	1	-	√	
69	[Energy storage unit 1] [Battery pack2] ]Total charge	RO	UINT32	kWh	100	38280	2	-	√	
70	[Energy storage unit 1] [Battery pack2] ]Total discharge	RO	UINT32	kWh	100	38282	2	-	√	
71	[Energy storage unit 1] [Battery pack3] ]SN	RO	STRING	N/A	N/A	38284	10	-	√	

No.	Signal Name	Read/Write	Type	Unit	Gain	Address	Quantity	Scope	HUAWEI-LUNA2000	LG-RESU
72	[Energy storage unit 1] [Battery pack3] Firmware version	RO	STRING	N/A	N/A	38294	15	-	√	
73	[Energy storage unit 1] [Battery pack3] Working status	RO	UINT16	N/A	N/A	38312	1	-	√	
74	[Energy storage unit 1] [Battery pack3] SOC	RO	UINT16	%	10	38313	1	-	√	
75	[Energy storage unit 1] [Battery pack3] Charge/Discharge power	RO	INT32	kW	1000	38317	2	-	√	

No.	Signal Name	Read/Write	Type	Unit	Gain	Address	Quantity	Scope	HUAWEI-LUNA2000	LG-RESU
76	[Energy storage unit 1] [Battery pack3] Voltage	RO	UINT16	V	10	38319	1	-	√	
77	[Energy storage unit 1] [Battery pack3] Current	RO	INT16	A	10	38320	1	-	√	
78	[Energy storage unit 1] [Battery pack3] Total charge	RO	UINT32	kWh	100	38322	2	-	√	
79	[Energy storage unit 1] [Battery pack3] Total discharge	RO	UINT32	kWh	100	38324	2	-	√	

No.	Signal Name	Read/Write	Type	Unit	Gain	Address	Quantity	Scope	HUAWEI-LUNA2000	LG-RESU
80	[Energy storage unit 2] [Battery pack1]SN	RO	STRING	N/A	N/A	38326	10	-	√	
81	[Energy storage unit 2] [Battery pack1]Firmware version	RO	STRING	N/A	N/A	38336	15	-	√	
82	[Energy storage unit 2] [Battery pack1]Working status	RO	UINT16	N/A	N/A	38354	1	-	√	
83	[Energy storage unit 2] [Battery pack1]SOC	RO	UINT16	%	10	38355	1	-	√	

No.	Signal Name	Read/Write	Type	Unit	Gain	Address	Quantity	Scope	HUAWEI-LUNA2000	LG-RESU
84	[Energy storage unit 2] [Battery pack1] ]Charge/Discharge power	RO	INT32	kW	1000	38359	2	-	√	
85	[Energy storage unit 2] [Battery pack1] ]Voltage	RO	UINT16	V	10	38361	1	-	√	
86	[Energy storage unit 2] [Battery pack1] ]Current	RO	INT16	A	10	38362	1	-	√	
87	[Energy storage unit 2] [Battery pack1] ]Total charge	RO	UINT32	kWh	100	38364	2	-	√	

No.	Signal Name	Read/Write	Type	Unit	Gain	Address	Quantity	Scope	HUAWEI-LUNA2000	LG-RESU
88	[Energy storage unit 2] [Battery pack1] ]Total discharge	RO	UINT32	kWh	100	38366	2	-	√	
89	[Energy storage unit 2] [Battery pack2] ]SN	RO	STRING	N/A	N/A	38368	10	-	√	
90	[Energy storage unit 2] [Battery pack2] ]Firmware version	RO	STRING	N/A	N/A	38378	15	-	√	
91	[Energy storage unit 2] [Battery pack2] ]Working status	RO	UINT16	N/A	N/A	38396	1	-	√	



No.	Signal Name	Read/Write	Type	Unit	Gain	Address	Quantity	Scope	HUAWEI-LUNA2000	LG-RESU
92	[Energy storage unit 2] [Battery pack2] SOC	RO	UINT16	%	10	38397	1	-	√	
93	[Energy storage unit 2] [Battery pack2] Charge/Discharge power	RO	INT32	kW	1000	38401	2	-	√	
94	[Energy storage unit 2] [Battery pack2] Voltage	RO	UINT16	V	10	38403	1	-	√	
95	[Energy storage unit 2] [Battery pack2] Current	RO	INT16	A	10	38404	1	-	√	

No.	Signal Name	Read/Write	Type	Unit	Gain	Address	Quantity	Scope	HUAWEI-LUNA2000	LG-RESU
96	[Energy storage unit 2] [Battery pack2] ]Total charge	RO	UINT32	kWh	100	38406	2	-	√	
97	[Energy storage unit 2] [Battery pack2] ]Total discharge	RO	UINT32	kWh	100	38408	2	-	√	
98	[Energy storage unit 2] [Battery pack3] ]SN	RO	STRING	N/A	N/A	38410	10	-	√	
99	[Energy storage unit 2] [Battery pack3] ]Firmware version	RO	STRING	N/A	N/A	38420	15	-	√	

No.	Signal Name	Read/Write	Type	Unit	Gain	Address	Quantity	Scope	HUAWEI-LUNA2000	LG-RESU
100	[Energy storage unit 2] [Battery pack3] Working status	RO	UINT16	N/A	N/A	38438	1	-	√	
101	[Energy storage unit 2] [Battery pack3] SOC	RO	UINT16	%	10	38439	1	-	√	
102	[Energy storage unit 2] [Battery pack3] Charge/Discharge power	RO	INT32	kW	1000	38443	2	-	√	
103	[Energy storage unit 2] [Battery pack3] Voltage	RO	UINT16	V	10	38445	1	-	√	

No.	Signal Name	Read/Write	Type	Unit	Gain	Address	Quantity	Scope	HUAWEI-LUNA2000	LG-RESU
104	[Energy storage unit 2] [Battery pack3] ]Current	RO	INT16	A	10	38446	1	-	√	
105	[Energy storage unit 2] [Battery pack3] ]Total charge	RO	UINT32	kWh	100	38448	2	-	√	
106	[Energy storage unit 2] [Battery pack3] ]Total discharge	RO	UINT32	kWh	100	38450	2	-	√	
107	[Energy storage unit 1] [Battery pack1] ]Maximum temperature	RO	INT16	°C	10	38452	1	-	√	

No.	Signal Name	Read/Write	Type	Unit	Gain	Address	Quantity	Scope	HUAWEI-LUNA2000	LG-RESU
108	[Energy storage unit 1] [Battery pack1] ]Minimum temperature	RO	INT16	°C	10	38453	1	-	√	
109	[Energy storage unit 1] [Battery pack2] ]Maximum temperature	RO	INT16	°C	10	38454	1	-	√	
110	[Energy storage unit 1] [Battery pack2] ]Minimum temperature	RO	INT16	°C	10	38455	1	-	√	

No.	Signal Name	Read/Write	Type	Unit	Gain	Address	Quantity	Scope	HUAWEI-LUNA2000	LG-RESU
111	[Energy storage unit 1] [Battery pack3] ]Maximum temperature	RO	INT16	°C	10	38456	1	-	√	
112	[Energy storage unit 1] [Battery pack3] ]Minimum temperature	RO	INT16	°C	10	38457	1	-	√	
113	[Energy storage unit 2] [Battery pack1] ]Maximum temperature	RO	INT16	°C	10	38458	1	-	√	

No.	Signal Name	Read/Write	Type	Unit	Gain	Address	Quantity	Scope	HUAWEI-LUNA2000	LG-RESU
114	[Energy storage unit 2] [Battery pack1] ]Minimum temperature	RO	INT16	°C	10	38459	1	-	√	
115	[Energy storage unit 2] [Battery pack2] ]Maximum temperature	RO	INT16	°C	10	38460	1	-	√	
116	[Energy storage unit 2] [Battery pack2] ]Minimum temperature	RO	INT16	°C	10	38461	1	-	√	

No.	Signal Name	Read/Write	Type	Unit	Gain	Address	Quantity	Scope	HUAWEI-LUNA2000	LG-RESU
117	[Energy storage unit 2] [Battery pack3] Maximum temperature	RO	INT16	°C	10	38462	1	-	√	
118	[Energy storage unit 2] [Battery pack3] Minimum temperature	RO	INT16	°C	10	38463	1	-	√	
119	[Energy storage unit 1] Product mode	RW	UINT16	N/A	1	47000	1	0: None 1: LG-RESU 2: HUAWEI-LUNA2000	√	√
120	[Energy storage] Time-of-use electricity price periods	RW	MULTI-DATA	N/A	1	47028	41	For details, see <a href="#">5.4</a>		√



No.	Signal Name	Read/Write	Type	Unit	Gain	Address	Quantity	Scope	HUAWEI-LUNA2000	LG-RESU
121	[Energy storage]Maximum charging power	RW	UINT32	W	1	47075	2	[0, Upper threshold] Default value: 3500;	√	√
122	[Energy storage]Maximum discharging power	RW	UINT32	W	1	47077	2	[0, Upper threshold] Default value: 3500;	√	√
123	[Energy storage]Charging cutoff capacity	RW	UINT16	%	10	47081	1	[90,100] Default value: 100	√	(√)
124	[Energy storage]Discharge cutoff capacity	RW	UINT16	%	10	47082	1	[12,20] Default value: 15	√	(√)
125	[Energy storage]Forced charging and discharging period	RW	UINT16	mins	1	47083	1	[0,1440] The value is not stored.	√	(√)

No.	Signal Name	Read/Write	Type	Unit	Gain	Address	Quantity	Scope	HUAWEI-LUNA2000	LG-RESU
126	[Energy storage] Forced charging and discharging power	RW	INT32	W	1	47084	2	[- "Maximum discharge power", "Maximum charge power"] Forced charge/discharge power ≤ Maximum charge/discharge power ≤ Rated charge/discharge power Do not store		

No.	Signal Name	Read/Write	Type	Unit	Gain	Address	Quantity	Scope	HUAWEI-LUNA2000	LG-RESU
127	[Energy storage]Working mode settings	RW	UINT16	N/A	1	47086	1	0:Adaptive(Fixed charge/discharge/Maximize self consumption); 1:Fixed charge/discharge; 2:Maximize self consumption; 3:Time Of Use(LG); 4:Fully fed to grid; 5:Time Of Use(Luna)	√	(√)
128	[Energy storage]Charge from grid Function	RW	UINT16	N/A	1	47087	1	0: Disable 1: Enable	√	(√)

No.	Signal Name	Read/Write	Type	Unit	Gain	Address	Quantity	Scope	HUAWEI-LUNA2000	LG-RESU
129	[Energy storage] Grid charge cutoff SOC	RW	UINT16	%	10	47088	1	[20,100] Default: 50	√	(√)
130	[Energy storage unit 2] Product model	RW	UINT16	N/A	1	47089	1	0: none 1: LG-RESU 2: HUAWEI-LUNA2000	√	
131	[Energy storage] Forcible charge / discharge	RW	UINT16	N/A	1	47100	1	0: Stop 1: Charge 2: Discharge	√	√
132	[Energy storage] Target SOC	RW	UINT16	%	10	47101	1	[0,100]		

No.	Signal Name	Read/Write	Type	Unit	Gain	Address	Quantity	Scope	HUAWEI-LUNA2000	LG-RESU
133	[Energy storage] Backup power SOC	RW	UINT16	%	10	47102	1	Definition: Reserved energy storage capacity in backup mode Setting range: [0,100] Execution range: LG: [12,100], Default value: 15 Luna: [0,100], Default value: 0	√	√
134	[Energy storage] Product model	RW	UINT16	N/A	1	47106	1	0:none 1:LG-RESU 2:HUAWEI-LUNA2000		

No.	Signal Name	Read/Write	Type	Unit	Gain	Address	Quantity	Scope	HUAWEI-LUNA2000	LG-RESU
135	[Energy storage unit 1] No.	RW	UINT16	N/A	1	47107	1	[0,65534] Default: 0. Which means no equipment.	√	
136	[Energy storage unit 2] No.	RW	UINT16	N/A	1	47108	1	[0,65534] Default: 0. Which means no equipment.	√	
137	[Energy storage] Fixed charging and discharging periods	RW	MULTIDATA	N/A	1	47200	41	For details, see <a href="#">5.4</a>		√
138	[Energy storage] Power of charge from grid	RW	UINT32	kW	1000	47242	2	[0, maximum power of charge from grid]	√	√

No.	Signal Name	Read/Write	Type	Unit	Gain	Address	Quantity	Scope	HUAWEI-LUNA2000	LG-RESU
139	[Energy storage]Maximum power of charge from grid	RW	UINT32	kW	1000	47244	2	Default:2000	√	√
140	[Energy storage]Forcible charge / discharge setting mode	RW	UINT16	N/A	1	47246	1	0: Duration	√	√
141	[Energy storage] Forcible charge power	RW	UINT32	kW	1000	47247	2	[0,maximum charge power]	√	√
142	[Energy storage] Forcible discharge power	RW	UINT32	kW	1000	47249	2	[0,maximum discharge power]	√	√

No.	Signal Name	Read/Write	Type	Unit	Gain	Address	Quantity	Scope	HUAWEI-LUNA2000	LG-RESU
143	[Energy storage]Time of Use charging and discharging periods	RW	Bytes	N/A	1	47255	43	For details, see 5.4	√	
144	[Energy storage] Excess PV energy use in TOU	RW	UINT16	N/A	1	47299	1	0: Fed to grid 1: Charge Note: Bound with the grid code. Japan: Fed to grid Other countries: Charge	√	



No.	Signal Name	Read/Write	Type	Unit	Gain	Address	Quantity	Scope	HUAWEI-LUNA2000	LG-RESU
145	Active power control mode	RW	UINT16	N/A	1	47415	1	0: Unlimited (default) 1: DI active scheduling 5: Zero power grid connection 6: Power-limited grid connection (kW) 7: Power-limited grid connection (%)		
146	Maximum Feed Grid Power (kW)	RW	INT32	Kw	1000	47416	2	[-100,0,Plant Capacity] default:0		
147	Maximum Feed Grid Power (%)	RW	INT16	%	10	47418	1	[0,100] default:0		

No.	Signal Name	Read/Write	Type	Unit	Gain	Address	Quantity	Scope	HUAWEI-LUNA2000	LG-RESU
148	[Dongle] [Plant]maximum charge-from-grid power	RW	UINT32	Kw	1000	47590	2	[0,30]	√	√
149	[Backup]Switch to off-grid	RW	UINT16	N/A	1	47604	1	0: Switch from grid-tied to off-grid	√	√
150	[Backup]Voltage in independent operation	RW	UINT16	V	1	47605	1	0: 101V 1: 202V	√	√
151	[Energy storage unit 1] [Battery pack1]No.	RW	UINT16	N/A	N/A	47750	1	[0,65534] Default: 0. Which means no equipment.	√	
152	[Energy storage unit 1] [Battery pack2]No.	RW	UINT16	N/A	N/A	47751	1	[0,65534] Default: 0. Which means no equipment.	√	

No.	Signal Name	Read/Write	Type	Unit	Gain	Address	Quantity	Scope	HUAWEI-LUNA2000	LG-RESU
153	[Energy storage unit 1] [Battery pack3] ]No.	RW	UINT16	N/A	N/A	47752	1	[0,65534] Default: 0. Which means no equipment.	√	
154	[Energy storage unit 2] [Battery pack1] ]No.	RW	UINT16	N/A	N/A	47753	1	[0,65534] Default: 0. Which means no equipment.	√	
155	[Energy storage unit 2] [Battery pack2] ]No.	RW	UINT16	N/A	N/A	47754	1	[0,65534] Default: 0. Which means no equipment.	√	
156	[Energy storage unit 2] [Battery pack3] ]No.	RW	UINT16	N/A	N/A	47755	1	[0,65534] Default: 0. Which means no equipment.	√	

**NOTICE**

[1] Two sets of energy storage devices at most can be connected to one inverter. If the inverter is connected to only one set of energy storage devices, the energy storage unit(ESU) corresponds to [Energy storage unit 1]. If two ESUs are connected, the second ESU corresponds to [Energy storage unit 2]. Currently, only one set of LG-RESU can be connected, and two sets of HUAWEI-LUNA2000 can be connected.

[2] (√) indicates that the register is used by LG energy storage devices in the old inverter but is no longer used in the new version.

### 3.3 Meter Equipment Register

**Table 3-3** Meter Register Definition List

No.	Signal Name	Read/Write	Type	Unit	Gain	Address	Quantity	Scope
1	Meter status	RO	UINT16	N/A	1	37100	1	0: offline 1: normal
2	Grid voltage (A phase)	RO	INT32	V	10	37101	2	
3	B phase voltage	RO	INT32	V	10	37103	2	
4	C phase voltage	RO	INT32	V	10	37105	2	
5	Grid current(A phase)	RO	INT32	A	100	37107	2	
6	B phase current	RO	INT32	A	100	37109	2	
7	C phase current	RO	INT32	A	100	37111	2	
8	Active power	RO	INT32	W	1	37113	2	>0: feed-in to the power grid. <0: supply from the power grid.
9	Reactive power	RO	INT32	Var	1	37115	2	

No.	Signal Name	Read/Write	Type	Unit	Gain	Address	Quantity	Scope
10	Power factor	RO	INT16	NA	1000	37117	1	
11	Grid frequency	RO	INT16	Hz	100	37118	1	
12	Positive active electricity	RO	INT32	kWh	100	37119	2	Electricity fed by the inverter to the power grid.
13	Reverse active power	RO	INT32	kWh	100	37121	2	Power supplied to a distributed system from the power grid.
14	Accumulated reactive power	RO	INT32	kVarh	100	37123	2	
15	Meter type	RO	UINT16	N/A	1	37125	1	0: single-phase. 1: three-phase.
16	A-B line voltage	RO	INT32	V	10	37126	2	
17	B-C line voltage	RO	INT32	V	10	37128	2	
18	CA line voltage	RO	INT32	V	10	37130	2	
19	A phase active power	RO	INT32	W	1	37132	2	> 0: feed-in to the power grid. <0: supply from the power grid
20	B phase active power	RO	INT32	W	1	37134	2	> 0: feed-in to the power grid. <0: supply from the power grid

No.	Signal Name	Read/Write	Type	Unit	Gain	Address	Quantity	Scope
21	C phase active power	RO	INT32	W	1	37136	2	> 0: feed-in to the power grid. <0: supply from the power grid
22	Meter model detection result	RO	UINT16	N/A	1	37138	1	0: being identified 1: The selected model is the same as the actual model of the connected meter. 2: The selected model is different from the actual model of the connected meter.

# 4 Customized Interfaces

## 4.1 Obtaining the System Information of Optimizers

Data synchronization mechanism: The host is driven to refresh the system information of optimizers by the change of the serial number (SN).

Synchronization process: For details, see [6.3.7.1 Uploading Files](#).

Data storage of the solar inverters: After the device search and positioning are complete, the record is updated. The record format is as follows:

File type: 0x45

**Table 4-1** File format(V103)

Data	Length (Bytes)	Remarks
File version	4	V103
Feature data sequence number	2	
Length	2	
Reserved	1	The reserved byte 0 is defined as the status. bit0: inverter disconnection status (1=disconnected)
	3	
Number of optimizers	2	Total number, including the offline optimizers.
Feature data of optimizer 1	116	For details about the data domain definition, see the Optimizer Feature Data Domain Definition.
Feature data of optimizer 2	116	

Data	Length (Bytes)	Remarks
Feature data of optimizer...	116	
Feature data of optimizer N	116	

**Table 4-2** Feature data unit format(V103)

Data	Length (Bytes)	Remarks
Optimizer address	2	RS485 address
Online status	2	0: offline 1: online 2: disconnected
String number	2	
Position in current string	2	relative positive connection starting point
SN	20	
Software version	30	
Alias	20	
Model	30	
Model ID	2	
One optimizer to N optimizers	2	Consistent with the optimizer southbound interface 30067
Rated power	2	
CPU Type	2	Consistent with the optimizer southbound interface 3009

**Table 4-3** File format(V102)

Data	Length (Bytes)	Remarks
File version	4	V102
Feature data sequence number	2	
Length	2	
Reserved	1	The reserved byte 0 is defined as the status. bit0: inverter disconnection status (1=disconnected)



Data	Length (Bytes)	Remarks
	3	
Number of optimizers	2	Total number, including the offline optimizers.
Feature data of optimizer 1	108	For details about the data domain definition, see the Optimizer Feature Data Domain Definition.
Feature data of optimizer 2	108	
Feature data of optimizer...	108	
Feature data of optimizer N	108	

**Table 4-4** Feature data unit format(V102)

Data	Length (Bytes)	Remarks
Optimizer address	2	RS485 address
Online status	2	0: offline 1: online 2: disconnected
String number	2	
Position in current string	2	relative positive connection starting point
SN	20	
Software version	30	
Alias	20	
Model	30	

**Table 4-5** Record format(V101)

Data	Length (Byte)	Remarks
Format version	4	V101
SN	2	-
Length	2	-
Reserved	4	-

Data	Length (Byte)	Remarks
Number of optimizers	2	$n$ , including the offline optimizers
Feature data of optimizer 1	78	-
Feature data of optimizer 2	78	-
...	...	-
Feature data of optimizer $n$	78	-

**Table 4-6** Feature data format (V101)

Data	Length (Byte)	Remarks
Optimizer address	2	Logical communication address
Status	2	0: offline 1: online
String number	2	-
Relative position of the PV string	2	1: near DC wiring terminals of the solar inverters
SN	20	-
Software version	30	-
Alias	20	-

## 4.2 Obtaining Real-time Data of Optimizers

Data synchronization mechanism: five-minute interval

Synchronization process: uploads the files and synchronizes data according to the time period; uploads the most recent data if there is no filter condition. For details, see [6.3.7.1 Uploading Files](#).

Data storage: stores real-time data at five-minute intervals.

File type: 0x44

**Table 4-7** Record format

Data	Length (Byte)	Remarks
File version	4	V101
Reserved	8	-

Data	Length (Byte)	Remarks
Optimizer data unit 1	N	12 + 26 x Number of optimizers , For details about the definition of this unit, see the data unit format.
Optimizer data unit 2	N	-
...	-	-
Optimizer data unit <i>n</i>	N	<i>n</i> indicates the number of data records that meet the filter condition. Each piece of data contains all optimizer data for a time node.

**Table 4-8** Data unit format (V101)

Data	Length (Byte)	Remarks
Time	4	Epoch seconds, local time
Reserved	4	-
Length	2	-
Number of optimizers	2	-
Real-time data of optimizer 1	26	For details about the definition of this unit, see the real-time data format.
Real-time data of optimizer 2	26	-
...	-	-
Real-time data of optimizer <i>n</i>	26	<i>n</i> is the number of optimizers.

**Table 4-9** Real-time data format

Data	Length (Byte)	Remarks
Optimizer address	2	Logical communication address
Output power	2	Gain: 10 Unit: W
Voltage to ground	2	Gain: 10 Unit: V

Data	Length (Byte)	Remarks
Alarm	4	Bit00: input overvoltage Bit01: input undervoltage Bit02: output overvoltage Bit04: overtemperature Bit06: output short circuit Bit07: EEPROM fault Bit08: internal hardware fault Bit09: abnormal voltage to ground Bit 10: power-off due to heartbeat timeout Bit 11: fast shutdown Bit 12: request escape alarm Bit 13: version mismatch alarm Bit 16: input overvoltage Bit 17: overtemperature Bit 18: output short circuit Bit 19: internal hardware fault Bit 20: version mismatch alarm Bit 21: backfeed alarm Bit 22: abnormal output voltage Bit 23: upgrade failure Bit 31: alarm display selection, 1=Display bit 16 to bit 30 alarms, 0: Bits 0 to 15 are displayed.
Output voltage	2	Gain: 10 Unit: V
Output current	2	Gain: 100 Unit: A
Input voltage	2	Gain: 10 Unit: V
Input current	2	Gain: 100 Unit: A
Temperature	2	Gain: 10 Unit: °C

Data	Length (Byte)	Remarks
Running status	2	0: offline 1: standby 3: faulty 4: running 12: power-off
Accumulated energy yield	4	Gain: 1000 Unit: kWh

# 5 Interface Instructions

## 5.1 Alarm Information

**Table 5-1** Alarm information

No.	Alarm	Bit	Alarm Name	Alarm ID	Level
1	Alarm 1	0	High String Input Voltage	2001	Major
2	Alarm 1	1	DC Arc Fault <sup>[1]</sup>	2002	Major
3	Alarm 1	2	String Reverse Connection	2011	Major
4	Alarm 1	3	String Current Backfeed	2012	Warning
5	Alarm 1	4	Abnormal String Power	2013	Warning
6	Alarm 1	5	AFCI Self-Check Fail. <sup>[1]</sup>	2021	Major
7	Alarm 1	6	Phase Wire Short-Circuited to PE	2031	Major
8	Alarm 1	7	Grid Loss	2032	Major
9	Alarm 1	8	Grid Undervoltage	2033	Major
10	Alarm 1	9	Grid Overvoltage	2034	Major
11	Alarm 1	10	Grid Volt. Imbalance	2035	Major

No.	Alarm	Bit	Alarm Name	Alarm ID	Level
12	Alarm 1	11	Grid Overfrequency	2036	Major
13	Alarm 1	12	Grid Underfrequency	2037	Major
14	Alarm 1	13	Unstable Grid Frequency	2038	Major
15	Alarm 1	14	Output Overcurrent	2039	Major
16	Alarm 1	15	Output DC Component Overhigh	2040	Major
17	Alarm 2	0	Abnormal Residual Current	2051	Major
18	Alarm 2	1	Abnormal Grounding	2061	Major
19	Alarm 2	2	Low Insulation Resistance	2062	Major
20	Alarm 2	3	Overtemperature	2063	Minor
21	Alarm 2	4	Device Fault	2064	Major
22	Alarm 2	5	Upgrade Failed or Version Mismatch	2065	Minor
23	Alarm 2	6	License Expired	2066	Warning
24	Alarm 2	7	Faulty Monitoring Unit	61440	Minor
25	Alarm 2	8	Faulty Power Collector <sup>[2]</sup>	2067	Major
26	Alarm 2	9	Battery abnormal	2068	Minor
27	Alarm 2	10	Active Islanding	2070	Major
28	Alarm 2	11	Passive Islanding	2071	Major
29	Alarm 2	12	Transient AC Overvoltage	2072	Major
30	Alarm 2	13	Peripheral port short circuit <sup>[3]</sup>	2075	Warning

No.	Alarm	Bit	Alarm Name	Alarm ID	Level
31	Alarm 2	14	Churn output overload <sup>[4]</sup>	2077	Major
32	Alarm 2	15	Abnormal PV module configuration	2080	Major
33	Alarm 3	0	Optimizer fault <sup>[5]</sup>	2081	Warning
34	Alarm 3	1	Built-in PID operation abnormal <sup>[6]</sup>	2085	Minor
35	Alarm 3	2	High input string voltage to ground.	2014	Major
36	Alarm 3	3	External Fan Abnormal	2086	Major
37	Alarm 3	4	Battery Reverse Connection <sup>[7]</sup>	2069	Major
38	Alarm 3	5	On-grid/Off-grid controller abnormal <sup>[4]</sup>	2082	Major
39	Alarm 3	6	PV String Loss	2015	Warning
40	Alarm 3	7	Internal Fan Abnormal	2087	Major
41	Alarm 3	8	DC Protection Unit Abnormal <sup>[8]</sup>	2088	Major
42	Alarm 3	9	EL Unit Abnormal	2089	Minor
43	Alarm 3	10	Active Adjustment Instruction Abnormal	2090	Major
44	Alarm 3	11	Reactive Adjustment Instruction Abnormal	2091	Major
45	Alarm 3	12	CT Wiring Abnormal	2092	Major
46	Alarm 3	13	DC Arc Fault(ADMC Alarm to be clear manually)	2003	Major
47	Alarm 3	14	DC Switch Abnormal	2093	Minor
48	Alarm 3	15	Allowable discharge capacity of the battery is low	2094	Warning



**NOTICE**

The preceding table lists the alarm information about Huawei solar inverters. Some alarms can be detected only after corresponding functional modules are configured.

**NOTE**

- [1] AFCI functional unit
- [2] Power collector or power meter connected to the solar inverters
- [3] Detection of the external ports of the solar inverters that provide the 12 V power supply
- [4] This item can be detected when a built-in or external on-grid/off-grid functional unit is configured.
- [5] This item can be detected when optimizers are configured on the DC side.
- [6] This item can be detected when the solar inverters are configured with PID functional units.
- [7] This item can be detected when energy storage units (ESUs) are configured.
- [8] Some models have DC protection units.

## 5.2 Power Grid Scheduling

This section describes the curve configuration format and precautions for power grid scheduling by curve.

### 5.2.1 $\cos\phi$ -P/P<sub>n</sub> Characteristic Curve

**Table 5-2**  $\cos\phi$ -P/P<sub>n</sub> characteristic curve definition

Description	Data Type	Gain	Unit	Value Range
Number of points	U16	1	N/A	[2, 10]
P/P <sub>n</sub> value at point 1	U16	10	%	[0, 100]
$\cos\phi$ value at point 1	I16	1000	N/A	(-1, -0.8]U[0.8, 1]
P/P <sub>n</sub> value at point 2	U16	10	%	[0, 100]
$\cos\phi$ value at point 2	I16	1000	N/A	(-1, -0.8]U[0.8, 1]
P/P <sub>n</sub> value at point 3	U16	10	%	[0, 100]
$\cos\phi$ value at point 3	I16	1000	N/A	(-1, -0.8]U[0.8, 1]
P/P <sub>n</sub> value at point 4	U16	10	%	[0, 100]
$\cos\phi$ value at point 4	I16	1000	N/A	(-1, -0.8]U[0.8, 1]
P/P <sub>n</sub> value at point 5	U16	10	%	[0, 100]
$\cos\phi$ value at point 5	I16	1000	N/A	(-1, -0.8]U[0.8, 1]
P/P <sub>n</sub> value at point 6	U16	10	%	[0, 100]

Description	Data Type	Gain	Unit	Value Range
cosφ value at point 6	I16	1000	N/A	(-1, -0.8]U[0.8, 1]
P/P <sub>n</sub> value at point 7	U16	10	%	[0,100]
cosφ value at point 7	I16	1000	N/A	(-1,-0.8]U[0.8,1]
P/P <sub>n</sub> value at point 8	U16	10	%	[0, 100]
cosφ value at point 8	I16	1000	N/A	(-1, -0.8]U[0.8, 1]
P/P <sub>n</sub> value at point 9	U16	10	%	[0, 100]
cosφ value at point 9	I16	1000	N/A	(-1, -0.8]U[0.8, 1]
P/P <sub>n</sub> value at point 10	U16	10	%	[0, 100]
cosφ value at point 10	I16	1000	N/A	(-1, -0.8]U[0.8, 1]

## 5.2.2 Q-U Characteristic Curve

Table2 Q-U Characteristic Curve definition

Description	Data Type	Gain	Unit	Value Range
Number of points	U16	1	N/A	[2, 10]
U/U <sub>n</sub> value at point 1	U16	10	%	[80, 136]
Q/S value at point 1	I16	1000	N/A	[-0.6, 0.6]
U/U <sub>n</sub> value at point 2	U16	10	%	[80, 136]
Q/S value at point 2	I16	1000	N/A	[-0.6, 0.6]
U/U <sub>n</sub> value at point 3	U16	10	%	[80, 136]
Q/S value at point 3	I16	1000	N/A	[-0.6, 0.6]
U/U <sub>n</sub> value at point 4	U16	10	%	[80, 136]
Q/S value at point 4	I16	1000	N/A	[-0.6, 0.6]
U/U <sub>n</sub> value at point 5	U16	10	%	[80, 136]
Q/S value at point 5	I16	1000	N/A	[-0.6, 0.6]
U/U <sub>n</sub> value at point 6	U16	10	%	[80, 136]
Q/S value at point 6	I16	1000	N/A	[-0.6, 0.6]
U/U <sub>n</sub> value at point 7	U16	10	%	[80, 136]

Description	Data Type	Gain	Unit	Value Range
Q/S value at point 7	I16	1000	N/A	[-0.6, 0.6]
U/U <sub>n</sub> value at point 8	U16	10	%	[80, 136]
Q/S value at point 8	I16	1000	N/A	[-0.6, 0.6]
U/U <sub>n</sub> value at point 9	U16	10	%	[80, 136]
Q/S value at point 9	I16	1000	N/A	[-0.6, 0.6]
U/U <sub>n</sub> value at point 10	U16	10	%	[80, 136]
Q/S value at point 10	I16	1000	N/A	[-0.6, 0.6]

**NOTICE**

In Italian standards, this curve may be used together with the **Q-U characteristic curve mode**, **Q-U dispatch trigger power (%)**, and **Q-U power percentage to exit scheduling** parameters.

### 5.2.3 PF-U Characteristic Curve

Table3 PF-U Characteristic Curve definition

Description	Data Type	Gain	Unit	Value Range
Number of points	U16	1	N/A	[2, 10]
U/U <sub>n</sub> value at point 1	U16	10	%	[80, 136]
PF value at point 1	I16	1000	N/A	(-1, -0.8]U[0.8, 1]
U/U <sub>n</sub> value at point 2	U16	10	%	[80, 136]
PF value at point 2	I16	1000	N/A	(-1, -0.8]U[0.8, 1]
U/U <sub>n</sub> value at point 3	U16	10	%	[80, 136]
PF value at point 3	I16	1000	N/A	(-1, -0.8]U[0.8, 1]
U/U <sub>n</sub> value at point 4	U16	10	%	[80, 136]
PF value at point 4	I16	1000	N/A	(-1, -0.8]U[0.8, 1]
U/U <sub>n</sub> value at point 5	U16	10	%	[80, 136]
PF value at point 5	I16	1000	N/A	(-1, -0.8]U[0.8, 1]
U/U <sub>n</sub> value at point 6	U16	10	%	[80, 136]
PF value at point 6	I16	1000	N/A	(-1, -0.8]U[0.8, 1]

Description	Data Type	Gain	Unit	Value Range
U/U <sub>n</sub> value at point 7	U16	10	%	[80, 136]
PF value at point 7	I16	1000	N/A	(-1, -0.8]U[0.8, 1]
U/U <sub>n</sub> value at point 8	U16	10	%	[80, 136]
PF value at point 8	I16	1000	N/A	(-1, -0.8]U[0.8, 1]
U/U <sub>n</sub> value at point 9	U16	10	%	[80, 136]
PF value at point 9	I16	1000	N/A	(-1, -0.8]U[0.8, 1]
U/U <sub>n</sub> value at point 10	U16	10	%	[80, 136]
PF value at point 10	I16	1000	N/A	(-1, -0.8]U[0.8, 1]

## 5.3 Grid Codes

Table 5-3 List of grid codes

No.	Standard	Applicable Country or Region
0	VDE-AR-N-4105	Germany
1	NB/T 32004	China
2	UTE C 15-712-1(A)	France
3	UTE C 15-712-1(B)	France
4	UTE C 15-712-1(C)	France
5	VDE 0126-1-1-BU	Bulgarian
6	VDE 0126-1-1-GR(A)	Greece
7	VDE 0126-1-1-GR(B)	Greece
8	BDEW-MV	Germany
9	G59-England	United Kingdom
10	G59-Scotland	United Kingdom
11	G83-England	United Kingdom
12	G83-Scotland	United Kingdom
13	CEI0-21	Italy
14	EN50438-CZ	Czech Republic
15	RD1699/661	Spain

No.	Standard	Applicable Country or Region
16	RD1699/661-MV480	Spain
17	EN50438-NL	Netherlands
18	C10/11	Belgium
19	AS4777	Australia
20	IEC61727	common
21	自定义(50Hz)	Custom
22	自定义(60Hz)	Custom
23	CEI0-16	Italy
24	CHINA-MV480	China
25	CHINA-MV	China
26	TAI-PEA	Thailand
27	TAI-MEA	Thailand
28	BDEW-MV480	Germany
29	自定义-MV480(50Hz)	Custom
30	自定义-MV480(60Hz)	Custom
31	G59-England-MV480	United Kingdom
32	IEC61727-MV480	common
33	UTE C 15-712-1-MV480	France
34	TAI-PEA-MV480	Thailand
35	TAI-MEA-MV480	Thailand
36	EN50438-DK-MV480	Denmark
37	日本标准(50Hz)	Japan
38	日本标准(60Hz)	Japan
39	EN50438-TR-MV480	Turkey
40	EN50438-TR	Turkey
41	C11/C10-MV480	Belgium
42	Philippines	Philippines
43	Philippines-MV480	Philippines
44	AS4777-MV480	Australia

No.	Standard	Applicable Country or Region
45	NRS-097-2-1	South Africa
46	NRS-097-2-1-MV480	South Africa
47	KOREA	Korea
48	IEEE 1547-MV480	United States
49	IEC61727-60Hz	common
50	IEC61727-60Hz-MV480	common
51	CHINA_MV500	China
52	ANRE	Romania
53	ANRE-MV480	Romania
54	ELECTRIC RULE NO.21-MV480	California, USA
55	HECO-MV480	Hawaii, United States
56	PRC_024_Eastern-MV480	Eastern U.S.
57	PRC_024_Western-MV480	American West
58	PRC_024_Quebec-MV480	Quebec, Canada
59	PRC_024_ERCOT-MV480	Texas, USA
60	PO12.3-MV480	Spain
61	EN50438_IE-MV480	Ireland
62	EN50438_IE	Ireland
63	IEEE 1547a-MV480	United States
64	日本标准 ( MV420-50Hz )	Japan
65	日本标准 ( MV420-60Hz )	Japan
66	日本标准 ( MV440-50Hz )	Japan
67	日本标准 ( MV440-60Hz )	Japan
68	IEC61727-50Hz-MV500	common
69	VDE-AR-N-4105-MV480	Germany
70	CEI0-16-MV480	Italy
71	PO12.3	Spain
72	日本标准 ( MV400-50Hz )	Japan

No.	Standard	Applicable Country or Region
73	日本标准 ( MV400-60Hz )	Japan
74	CEIO-21-MV480	Italy
75	KOREA-MV480	Korea
76	Egypt ETEC	Egypt
77	Egypt ETEC-MV480	Egypt
78	CHINA_MV800	China
79	IEEE 1547-MV600	United States
80	ELECTRIC RULE NO.21-MV600	California, USA
81	HECO-MV600	Hawaii, United States
82	PRC_024_Eastern-MV600	Eastern U.S.
83	PRC_024_Western-MV600	American West
84	PRC_024_Quebec-MV600	Quebec, Canada
85	PRC_024_ERCOT-MV600	Texas, USA
86	IEEE 1547a-MV600	United States
87	EN50549-LV	Ireland
88	EN50549-MV480	Ireland
89	Jordan-Transmission	Jordan
90	Jordan-Transmission-MV480	Jordan
91	NAMIBIA	Namibia
92	ABNT NBR 16149	Brazil
93	ABNT NBR 16149-MV480	Brazil
94	SA_RPPs	South Africa
95	SA_RPPs-MV480	South Africa
96	INDIA	India
97	INDIA-MV500	India
98	ZAMBIA	Zambia
99	ZAMBIA-MV480	Zambia

No.	Standard	Applicable Country or Region
100	Chile	Chile
101	Chile-MV480	Chile
102	CHINA-MV500-STD	China
103	CHINA-MV480-STD	China
104	Mexico-MV480	Mexico
105	Malaysian	Malaysia
106	Malaysian-MV480	Malaysia
107	KENYA_ETHIOPIA	East Africa
108	KENYA_ETHIOPIA-MV480	East Africa
109	G59-England-MV800	United Kingdom
110	NIGERIA	Nigeria
111	NIGERIA-MV480	Nigeria
112	DUBAI	Duba
113	DUBAI-MV480	Duba
114	Northern Ireland	Northern Ireland
115	Northern Ireland-MV480	Northern Ireland
116	Cameroon	Cameroon
117	Cameroon-MV480	Cameroon
118	Jordan-Distribution	Jordan
119	Jordan-Distribution-MV480	Jordan
120	Custom-MV600-50Hz	Custom
121	AS4777-MV800	Australia
122	INDIA-MV800	India
123	IEC61727-MV800	common
124	BDEW-MV800	Germany
125	ABNT NBR 16149-MV800	Brazil
126	UTE C 15-712-1-MV800	France
127	Chile-MV800	Chile



No.	Standard	Applicable Country or Region
128	Mexico-MV800	Mexico
129	EN50438-TR-MV800	Turkey
130	TAI-PEA-MV800	Thailand
131	Philippines-MV800	Philippines
132	Malaysian-MV800	Malaysia
133	NRS-097-2-1-MV800	South Africa
134	SA_RPPs-MV800	South Africa
135	Jordan-Transmission-MV800	Jordan
136	Jordan-Distribution-MV800	Jordan
137	Egypt ETEC-MV800	Egypt
138	DUBAI-MV800	Duba
139	SAUDI-MV800	Saudi Arabia
140	EN50438_IE-MV800	Ireland
141	EN50549-MV800	Ireland
142	Northern Ireland-MV800	Northern Ireland
143	CEIO-21-MV800	Italy
144	IEC 61727-MV800-60Hz	common
145	NAMIBIA_MV480	Namibia
146	Japan ( LV202-50Hz )	Japan
147	Japan ( LV202-60Hz )	Japan
148	Pakistan-MV800	Pakistan
149	BRASIL-ANEEL-MV800	Brazil
150	Israel-MV800	Israel
151	CEIO-16-MV800	Italy
152	ZAMBIA-MV800	Zambia
153	KENYA_ETHIOPIA-MV800	East Africa
154	NAMIBIA_MV800	Namibia
155	Cameroon-MV800	Cameroon

No.	Standard	Applicable Country or Region
156	NIGERIA-MV800	Nigeria
157	ABUDHABI-MV800	Abu Dhabi
158	LEBANON	Lebanon
159	LEBANON-MV480	Lebanon
160	LEBANON-MV800	Lebanon
161	ARGENTINA-MV800	Argentina
162	ARGENTINA-MV500	Argentina
163	Jordan-Transmission-HV	Jordan
164	Jordan-Transmission-HV480	Jordan
165	Jordan-Transmission-HV800	Jordan
166	TUNISIA	Tunisia
167	TUNISIA-MV480	Tunisia
168	TUNISIA-MV800	Tunisia
169	JAMAICA-MV800	Jamaica
170	AUSTRALIA-NER	Australia
171	AUSTRALIA-NER-MV480	Australia
172	AUSTRALIA-NER-MV800	Australia
173	SAUDI	Saudi Arabia
174	SAUDI-MV480	Saudi Arabia
175	Ghana-MV480	Ghana
176	Israel	Israel
177	Israel-MV480	Israel
178	Chile-PMGD	Chile
179	Chile-PMGD-MV480	Chile
180	VDE-AR-N4120-HV	Germany
181	VDE-AR-N4120-HV480	Germany
182	VDE-AR-N4120-HV800	Germany
183	IEEE 1547-MV800	United States

No.	Standard	Applicable Country or Region
184	Nicaragua-MV800	Nicaragua
185	IEEE 1547a-MV800	United States
186	ELECTRIC RULE NO.21-MV800	California, USA
187	HECO-MV800	Hawaii, United States
188	PRC_024_Eastern-MV800	Eastern U.S.
189	PRC_024_Western-MV800	American West
190	PRC_024_Quebec-MV800	Quebec, Canada
191	PRC_024_ERCOT-MV800	Texas, USA
192	Custom-MV800-50Hz	Custom
193	RD1699/661-MV800	Spain
194	PO12.3-MV800	Spain
195	Mexico-MV600	Mexico
196	Vietnam-MV800	Vietnam
197	CHINA-LV220/380	China
198	SVG-LV	Specialized
199	Vietnam	Vietnam
200	Vietnam-MV480	Vietnam
201	Chile-PMGD-MV800	Chile
202	Ghana-MV800	Ghana
203	TAIPOWER	China Taiwan
204	TAIPOWER-MV480	China Taiwan
205	TAIPOWER-MV800	China Taiwan
206	IEEE 1547-LV208	United States
207	IEEE 1547-LV240	United States
208	IEEE 1547a-LV208	United States
209	IEEE 1547a-LV240	United States
210	ELECTRIC RULE NO.21-LV208	United States

No.	Standard	Applicable Country or Region
211	ELECTRIC RULE NO.21-LV240	United States
212	HECO-O+M+H-LV208	United States
213	HECO-O+M+H-LV240	United States
214	PRC_024_Eastern-LV208	United States
215	PRC_024_Eastern-LV240	United States
216	PRC_024_Western-LV208	United States
217	PRC_024_Western-LV240	United States
218	PRC_024_ERCOT-LV208	United States
219	PRC_024_ERCOT-LV240	United States
220	PRC_024_Quebec-LV208	United States
221	PRC_024_Quebec-LV240	United States
222	ARGENTINA-MV480	Argentina
223	Oman	Oman
224	Oman-MV480	Oman
225	Oman-MV800	Oman
226	Kuwait	Kuwait
227	Kuwait-MV480	Kuwait
228	Kuwait-MV800	Kuwait
229	Bangladesh	Bengal
230	Bangladesh-MV480	Bengal
231	Bangladesh-MV800	Bengal
232	Chile-Net_Billing	Chile
233	EN50438-NL-MV480	Netherlands
234	Bahrain	Bahrain
235	Bahrain-MV480	Bahrain
236	Bahrain-MV800	Bahrain
237	Fuel-Engine-Grid	Specialized
238	Japan-MV550-50Hz	Japan
239	Japan-MV550-60Hz	Japan

No.	Standard	Applicable Country or Region
240	Fuel-Engine-Grid-60Hz	Specialized
241	ARGENTINA	Argentina
242	KAZAKHSTAN-MV800	Kazakhstan
243	Mauritius	Mauritius
244	Mauritius-MV480	Mauritius
245	Mauritius-MV800	Mauritius
246	Oman-PDO-MV800	Oman
247	EN50438-SE	Sweden
248	TAI-MEA-MV800	Thailand
249	Pakistan	Pakistan
250	Pakistan-MV480	Pakistan
251	PORTUGAL-MV800	Portugal
252	HECO-L+M-LV208	United States
253	HECO-L+M-LV240	United States
254	C10/11-MV800	Belgium
255	Austria	Austria
256	Austria-MV480	Austria
257	G98	United Kingdom
258	G99-TYPEA-LV	United Kingdom
259	G99-TYPEB-LV	United Kingdom
260	G99-TYPEB-HV	United Kingdom
261	G99-TYPEB-HV-MV480	United Kingdom
262	G99-TYPEB-HV-MV800	United Kingdom
263	G99-TYPEC-HV-MV800	United Kingdom
264	G99-TYPED-MV800	United Kingdom
265	G99-TYPEA-HV	United Kingdom
266	CEA-MV800	India
267	EN50549-MV400	Europe
268	VDE-AR-N4110	Germany

No.	Standard	Applicable Country or Region
269	VDE-AR-N4110-MV480	Germany
270	VDE-AR-N4110-MV800	Germany
271	Panama-MV800	Panama
272	Macedonia-MV800	Macedonian
273	NTS	Spain
274	NTS-MV480	Spain
275	NTS-MV800	Spain
276	AS4777-WP	Australia
277	CEA	India
278	CEA-MV480	India
279	SINGAPORE	Singapore
280	SINGAPORE-MV480	Singapore
281	SINGAPORE-MV800	Singapore
282	HONGKONG	Hong Kong
283	HONGKONG-MV480	Hong Kong
284	C10/11-MV400	Belgium
285	KOREA-MV800	Korea
286	Cambodia	Cambodia
287	Cambodia-MV480	Cambodia
288	Cambodia-MV800	Cambodia
289	EN50549-SE	Sweden
290	GREG030	Columbia
291	GREG030-MV440	Columbia
292	GREG030-MV480	Columbia
293	GREG060-MV800	Columbia
294	PERU-MV800	Peru
295	PORTUGAL	Portugal
296	PORTUGAL-MV480	Portugal
297	AS4777-ACT	Australia

No.	Standard	Applicable Country or Region
298	AS4777-NSW-ESS	Australia
299	AS4777-NSW-AG	Australia
300	AS4777-QLD	Australia
301	AS4777-SA	Australia
302	AS4777-VIC	Australia
303	EN50549-PL	Poland
304	Island-Grid	common
305	TAIPOWER-LV220	China Taiwan
306	Mexico-LV220	Mexico
307	ABNT NBR 16149-LV127	Brazil
308	Philippines-LV220-50Hz	Philippines
309	Philippines-LV220-60Hz	Philippines
310	Israel-HV800	Israel
311	DENMARK-EN50549-DK1-LV230	Denmark
312	DENMARK-EN50549-DK2-LV230	Denmark
313	SWITZERLAND-NA/EEA:2020-LV230	Switzerland
314	Japan-LV202-50Hz	Japan
315	Japan-LV202-60Hz	Japan
316	AUSTRIA-MV800	Austria
317	AUSTRIA-HV800	Austria
318	POLAND-EN50549-MV800	Poland
319	IRELAND-EN50549-LV230	Ireland
320	IRELAND-EN50549-MV480	Ireland
321	IRELAND-EN50549-MV800	Ireland
322	DENMARK-EN50549-MV800	Denmark

No.	Standard	Applicable Country or Region
323	FRANCE-RTE-MV800	France
324	AUSTRALIA-AS4777_A-LV230	Australia
325	AUSTRALIA-AS4777_B-LV230	Australia
326	AUSTRALIA-AS4777_C-LV230	Australia
327	AUSTRALIA-AS4777_NZ-LV230	Australia
328	AUSTRALIA-AS4777_A-MV800	Australia
329	CHINA-GBT34120-MV800	China
330	UZBEKISTAN-MV800	Uzbekistan
331	CHINA-GBT34120-MV380	China
332	N/A	N/A
333	CHINA-MV690	China
334	IEC61727-MV720	India
335	INDIA-CEA-MV720	India
336	SA-NRS-097-MV720	South Africa
337	SA-RPPS-MV720	South Africa
338	SAUDI-MV720	Saudi Arabia
339	UZBEKISTAN-MV720	Uzbekistan
340	EGYPT-ETEC-MV720	Egypt
341	KAZAKHSTAN-MV690	Kazakhstan
342	CHINA-CUSTOM-MV800	China
343	JAPAN-MV200-50Hz	Japan
344	JAPAN-MV210-50Hz	Japan
345	JAPAN-MV230-50Hz	Japan
346	JAPAN-MV250-50Hz	Japan
347	JAPAN-MV200-60Hz	Japan



No.	Standard	Applicable Country or Region
348	JAPAN-MV210-60Hz	Japan
349	JAPAN-MV230-60Hz	Japan
350	JAPAN-MV250-60Hz	Japan
351	CZECH-EN50549-LV230	Czech Republic
352	CZECH-EN50549-MV480	Czech Republic
353	CZECH-EN50549-MV800	Czech Republic
354	CHINA_MV315	China
355	KOREA-MV690-60Hz	Korea
356	ANRE-MV800	Romania
357	FINLAND-EN50549-LV230	Finland
358	AUSTRIA-MV400-50Hz	Austria
359	SAUDI-LV220	Saudi Arabia
360	CHINA-MV285	China
361	CHINA-MV360	China
362	JAPAN-MV270-50Hz	Japan
363	JAPAN-MV330-50Hz	Japan
364	JAPAN-MV380-50Hz	Japan
365	JAPAN-MV270-60Hz	Japan
366	JAPAN-MV330-60Hz	Japan
367	JAPAN-MV380-60Hz	Japan
368	LITHUANIA-EN50549-MV800	Lithuania
369	FINLAND-EN50549-MV400	Finland
370	FINLAND-EN50549-MV480	Finland
371	FINLAND-EN50549-MV800	Finland
372	EN50549-SE-MV400	Sweden
373	EN50549-SE-MV480	Sweden

No.	Standard	Applicable Country or Region
374	EN50549-SE-MV800	Sweden
375	CEPM	Dominican Republic
376	CEPM-MV480	Dominican Republic
377	CEPM-MV800	Dominican Republic
378	SA-BESF-L	South Africa
379	SA-BESF-L-MV480	South Africa
380	SA-BESF-L-MV800	South Africa
381	SA-BESF-H	South Africa
382	SA-BESF-H-MV480	South Africa
383	SA-BESF-H-MV800	South Africa
384	BRAZIL-P140-LV220	Brazil
385	NEW CALEDONIA-LV230	New Caledonia
386	Israel-MV400	Israel
387	ANRE-TYPEB	Romania
388	ANRE-TYPEB-MV480	Romania
389	AUSTRIA- NER_TYPEB_LV400	Austria
390	AUSTRIA- NER_TYPEB_LV480	Austria
391	AUSTRIA- NER_TYPEB_MV400	Austria
392	AUSTRIA- NER_TYPEB_MV480	Austria
393	IRAQ-MV800	Iraq
394	MOROCCO-MV800	Morocco
395	ALGERIA-MV800	Algeria
396	CHINA-GBT19964- MV800	China
397	CHINA-GBT29319- MV800	China
398	SENEGAL	Senegal
399	SENEGAL-MV480	Senegal

No.	Standard	Applicable Country or Region
400	SENEGAL-MV800	Senegal
401	NC2022	New Caledonia

**NOTICE**

Set the grid code based on local laws and regulations.

## 5.4 Energy Storage Specifications

**Table 5-4** Format description of parameters for time-of-use electricity price periods(LG-RESU)

Description	Data Type	Gain	Unit	Value Range
Number of periods	U16	1	N/A	[0, 10]
Start time of period 1	U16	1	min	[0, 1440]. The value is the elapsed minutes since 00:00 a.m. The start time should be earlier than the end time.
End time of period 1	U16	1	min	[0, 1440]. The value is the elapsed minutes since 00:00 a.m. The start time should be earlier than the end time.
Electricity price in period 1	U32	1000	N/A	N/A
Start time of period 2	U16	1	min	[0, 1440]. The value is the elapsed minutes since 00:00 a.m. The start time should be earlier than the end time.
End time of period 2	U16	1	min	[0, 1440]. The value is the elapsed minutes since 00:00 a.m. The start time should be earlier than the end time.
Electricity price in period 2	U32	1000	N/A	N/A
...	...	...	...	...

Description	Data Type	Gain	Unit	Value Range
Start time of period 10	U16	1	min	[0, 1440]. The value is the elapsed minutes since 00:00 a.m. The start time should be earlier than the end time.
End time of period 10	U16	1	min	[0, 1440]. The value is the elapsed minutes since 00:00 a.m. The start time should be earlier than the end time.
Electricity price in period 10	U32	1000	N/A	N/A

**Table 5-5** Format description of parameters for fixed charging and discharging periods

Description	Data Type	Gain	Unit	Value Range
Number of periods	U16	1	N/A	[0, 10]
Start time of period 1	U16	1	min	[0, 1440]. The value is the elapsed minutes since 00:00 a.m. The start time should be earlier than the end time.
End time of period 1	U16	1	min	[0, 1440]. The value is the elapsed minutes since 00:00 a.m. The start time should be earlier than the end time.
Charging and discharging power in period 1	I32	1	W	[Discharging power limit, Charging power limit]. For details, see the description of the supported model.
Start time of period 2	U16	1	min	[0, 1440]. The value is the elapsed minutes since 00:00 a.m. The start time should be earlier than the end time.
End time of period 2	U16	1	min	[0, 1440]. The value is the elapsed minutes since 00:00 a.m. The start time should be earlier than the end time.

Description	Data Type	Gain	Unit	Value Range
Charging and discharging power in period 2	I32	1	W	[Discharging power limit, Charging power limit]. For details, see the description of the supported model.
...	...	...	...	...
Start time of period 10	U16	1	min	[0, 1440]. The value is the elapsed minutes since 00:00 a.m. The start time should be earlier than the end time.
End time of period 10	U16	1	min	[0, 1440]. The value is the elapsed minutes since 00:00 a.m. The start time should be earlier than the end time.
Charging and discharging power in period 10	I32	1	W	[Discharging power limit, Charging power limit]. For details, see the description of the supported model.

**Table 5-6** Format description of parameters for time-of-use electricity price periods(HUAWEI-LUNA2000)

Description	Data Type	Gain	Unit	Value Range
Number of periods	U16	1	-	[0, 14]
Start time of period 1	U16	1	min	[0, 1440]. The value is the elapsed minutes since 00:00 a.m. The start time should be earlier than the end time.
End time of period 1	U16	1	min	[0, 1440]. The value is the elapsed minutes since 00:00 a.m. The start time should be earlier than the end time.
Charge/Discharge flag of period 1	U8	-	-	0:Charge 1:Discharge

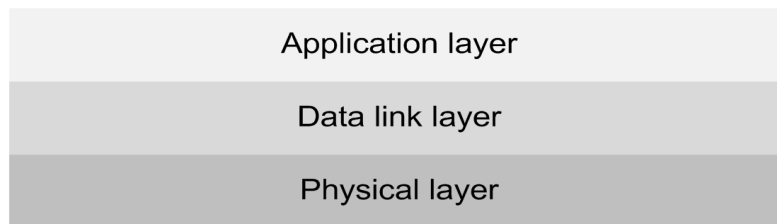
Description	Data Type	Gain	Unit	Value Range
Effective time flag of period 1	U8	-	-	There are 7 bits (from bit 0 to bit 6) standing for each day of a week (from Sunday to Saturday). 0: invalid 1: valid
Start time of period 2	U16	1	min	[0, 1440]. The value is the elapsed minutes since 00:00 a.m. The start time should be earlier than the end time.
End time of period 2	U16	1	min	[0, 1440]. The value is the elapsed minutes since 00:00 a.m. The start time should be earlier than the end time.
Charge/Discharge flag of period 2	U8	-	-	0:Charge 1:Discharge
Effective time flag of period 2	U8	-	-	There are 7 bits (from bit 0 to bit 6) standing for each day of a week (from Sunday to Saturday). 0: invalid 1: valid
.....	-	-	-	-
Start time of period 14	U16	1	min	[0, 1440]. The value is the elapsed minutes since 00:00 a.m. The start time should be earlier than the end time.
End time of period 14	U16	1	min	[0, 1440]. The value is the elapsed minutes since 00:00 a.m. The start time should be earlier than the end time.
Charge/Discharge flag of period 14	U8	-	-	0:Charge 1:Discharge

Description	Data Type	Gain	Unit	Value Range
Effective time flag of period 14	U8	-	-	There are 7 bits (from bit 0 to bit 6) standing for each day of a week (from Sunday to Saturday). 0: invalid 1: valid

# 6 Overview of the Communications Protocol

The Modbus communications protocol consists of the following layers.

Figure 6-1 Modbus protocol layers



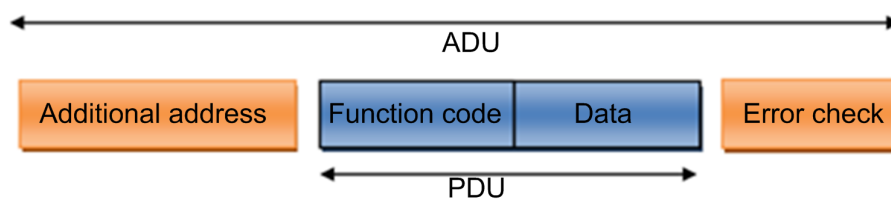
## 6.1 Physical Layer

Huawei solar inverters provide Modbus communication based on physical media such as MBUS, RS485, WLAN, FE, and 4G. MBUS and RS485 comply with the Modbus-RTU format. The communication through the WLAN, FE, and 4G media is based on the TCP link and complies with the Modbus-TCP format.

## 6.2 Data Link Layer

The following figure shows the generic frame structure of the Modbus protocol.

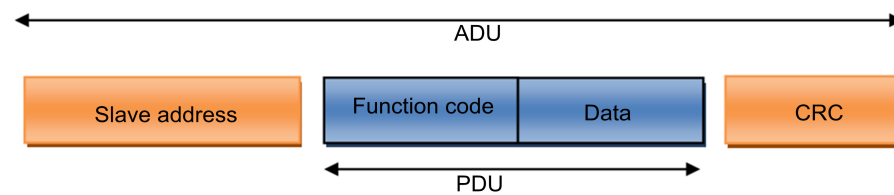
Figure 6-2 Modbus generic frame format





## 6.2.1 Modbus-RTU

Figure 6-3 Modbus-RTU frame format



### 6.2.1.1 ADU Length

The application data unit (ADU) consists of 256 bytes based on the serial bus.

1. Slave address: 1 byte
2. Cyclic redundancy check (CRC): 2 bytes
3. PDU: 253 bytes

### 6.2.1.2 Communications Address

As shown in [Figure 6-3](#), Modbus-RTU is usually used for serial communication. Slave address represents the address of a slave solar inverter. The address range is allocated as follows:

Table 6-1 Serial link address allocation

Broadcast Address	Slave Node Address	Reserved Address
0	1–247	248–255

Reserved addresses are used for access control of the communication extension modules. Huawei reserves the right to allocate the reserved addresses.

### 6.2.1.3 CRC

CRC applies to all bytes in front of the CRC code, which consists of 16 bits. The reference code is as follows:

```
static unsigned char auchCRCHi[] = {
0x00, 0xC1, 0x81, 0x40, 0x01, 0xC0, 0x80, 0x41, 0x01, 0xC0, 0x80, 0x41, 0x00, 0xC1, 0x81,
0x40, 0x01, 0xC0, 0x80, 0x41, 0x00, 0xC1, 0x81, 0x40, 0x00, 0xC1, 0x81, 0x40, 0x01, 0xC0,
0x80, 0x41, 0x01, 0xC0, 0x80, 0x41, 0x00, 0xC1, 0x81, 0x40, 0x00, 0xC1, 0x81, 0x40, 0x01,
0xC0, 0x80, 0x41, 0x00, 0xC1, 0x81, 0x40, 0x01, 0xC0, 0x80, 0x41, 0x01, 0xC0, 0x80, 0x41,
0x00, 0xC1, 0x81, 0x40, 0x01, 0xC0, 0x80, 0x41, 0x00, 0xC1, 0x81, 0x40, 0x00, 0xC1, 0x81,
0x40, 0x01, 0xC0, 0x80, 0x41, 0x00, 0xC1, 0x81, 0x40, 0x01, 0xC0, 0x80, 0x41, 0x01, 0xC0,
0x80, 0x41, 0x00, 0xC1, 0x81, 0x40, 0x00, 0xC1, 0x81, 0x40, 0x01, 0xC0, 0x80, 0x41, 0x01,
0xC0, 0x80, 0x41, 0x00, 0xC1, 0x81, 0x40, 0x00, 0xC1, 0x81, 0x40, 0x01, 0xC0, 0x80, 0x41,
0x01, 0xC0, 0x80, 0x41, 0x00, 0xC1, 0x81, 0x40, 0x01, 0xC0, 0x80, 0x41, 0x00, 0xC1, 0x81,
0x40, 0x01, 0xC0, 0x80, 0x41, 0x01, 0xC0, 0x80, 0x41, 0x00, 0xC1, 0x81, 0x40, 0x01, 0xC0,
0x80, 0x41, 0x00, 0xC1, 0x81, 0x40, 0x00, 0xC1, 0x81, 0x40, 0x01, 0xC0, 0x80, 0x41, 0x01,
```

```

0xC0, 0x80, 0x41, 0x00, 0xC1, 0x81, 0x40, 0x00, 0xC1, 0x81, 0x40, 0x01, 0xC0, 0x80, 0x41,
0x00, 0xC1, 0x81, 0x40, 0x01, 0xC0, 0x80, 0x41, 0x01, 0xC0, 0x80, 0x41, 0x00, 0xC1, 0x81,
0x40
};
/*CRC values for the low-order byte*/
static char auchCRCLo[] = {
0x00, 0xC0, 0xC1, 0x01, 0xC3, 0x03, 0x02, 0xC2, 0xC6, 0x06, 0x07, 0xC7, 0x05, 0xC5, 0xC4,
0x04, 0xCC, 0x0C, 0x0D, 0xCD, 0x0F, 0xCF, 0xCE, 0x0E, 0x0A, 0xCA, 0xCB, 0x0B, 0xC9, 0x09,
0x08, 0xC8, 0xD8, 0x18, 0x19, 0xD9, 0x1B, 0xDB, 0xDA, 0x1A, 0x1E, 0xDE, 0xDF, 0x1F, 0xDD,
0x1D, 0x1C, 0xDC, 0x14, 0xD4, 0xD5, 0x15, 0xD7, 0x17, 0x16, 0xD6, 0xD2, 0x12, 0x13, 0xD3,
0x11, 0xD1, 0xD0, 0x10, 0xF0, 0x30, 0x31, 0xF1, 0x33, 0xF3, 0xF2, 0x32, 0x36, 0xF6, 0xF7,
0x37, 0xF5, 0x35, 0x34, 0xF4, 0x3C, 0xFC, 0xFD, 0x3D, 0xFF, 0x3F, 0x3E, 0xFE, 0xFA, 0x3A,
0x3B, 0xFB, 0x39, 0xF9, 0xF8, 0x38, 0x28, 0xE8, 0xE9, 0x29, 0xEB, 0x2B, 0x2A, 0xEA, 0xEE,
0x2E, 0x2F, 0xEF, 0x2D, 0xED, 0xEC, 0x2C, 0xE4, 0x24, 0x25, 0xE5, 0x27, 0xE7, 0xE6, 0x26,
0x22, 0xE2, 0xE3, 0x23, 0xE1, 0x21, 0x20, 0xE0, 0xA0, 0x60, 0x61, 0xA1, 0x63, 0xA3, 0xA2,
0x62, 0x66, 0xA6, 0xA7, 0x67, 0xA5, 0x65, 0x64, 0xA4, 0x6C, 0xAC, 0xAD, 0x6D, 0xAF, 0x6F,
0x6E, 0xAE, 0xAA, 0x6A, 0x6B, 0xAB, 0x69, 0xA9, 0xA8, 0x68, 0x78, 0xB8, 0xB9, 0x79, 0xBB,
0x7B, 0x7A, 0xBA, 0xBE, 0x7E, 0x7F, 0xBF, 0x7D, 0xBD, 0xBC, 0x7C, 0xB4, 0x74, 0x75, 0xB5,
0x77, 0xB7, 0xB6, 0x76, 0x72, 0xB2, 0xB3, 0x73, 0xB1, 0x71, 0x70, 0xB0, 0x50, 0x90, 0x91,
0x51, 0x93, 0x53, 0x52, 0x92, 0x96, 0x56, 0x57, 0x97, 0x55, 0x95, 0x94, 0x54, 0x9C, 0x5C,
0x5D, 0x9D, 0x5F, 0x9F, 0x9E, 0x5E, 0x5A, 0x9A, 0x9B, 0x5B, 0x99, 0x59, 0x58, 0x98, 0x88,
0x48, 0x49, 0x89, 0x4B, 0x8B, 0x8A, 0x4A, 0x4E, 0x8E, 0x8F, 0x4F, 0x8D, 0x4D, 0x4C, 0x8C,
0x44, 0x84, 0x85, 0x45, 0x87, 0x47, 0x46, 0x86, 0x82, 0x42, 0x43, 0x83, 0x41, 0x81, 0x80, 0x40
};

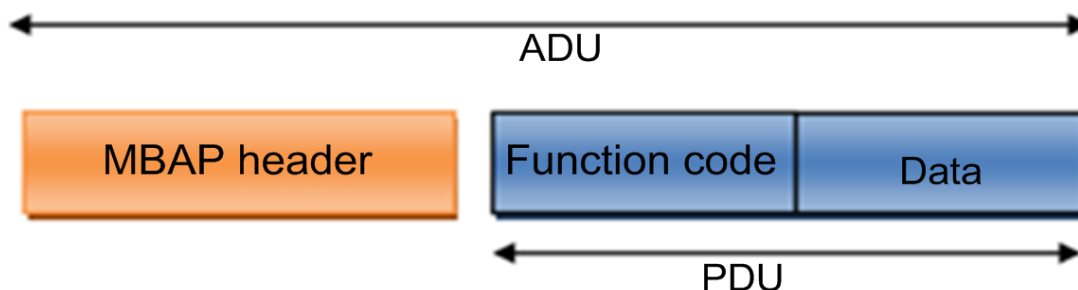
unsigned short CRC16 ( puchMsg, usDataLen ) /* The function returns the CRC as a unsigned short type */
unsigned char *puchMsg ; /* message to calculate CRC upon */
unsigned short usDataLen ; /* quantity of bytes in message */
{
unsigned char uchCRCHI = 0xFF ; /* high byte of CRC initialized */
unsigned char uchCRCLo = 0xFF ; /* low byte of CRC initialized */
unsigned ulIndex ; /* will index into CRC lookup table */
while (usDataLen--) /* pass through message buffer */
{
ulIndex = uchCRCLo ^ *puchMsg++ ; /* calculate the CRC */
uchCRCLo = uchCRCHI ^ auchCRCHI[ulIndex] ;
uchCRCHI = auchCRCLo[ulIndex] ;
}
return (uchCRCHI << 8 | uchCRCLo) ;
}

```

Code source: *MODBUS over Serial Line Specification and Implementation Guide V1.02*

## 6.2.2 Modbus-TCP

Figure 6-4 Modbus-TCP frame format



### 6.2.2.1 ADU Length

The recommended frame length is 260 bytes based on the standard. When some extended functions are applied, the data service provider may extend the ADU to a proper length based on the resources it possesses, to improve network

transmission efficiency. The ADU length is indicated by the length field in the MBAP packet header.

### 6.2.2.2 MBAP Packet Header

If Modbus is applied to TCP/IP, a dedicated MBAP packet header (Modbus application protocol packet header) is used to identify the Modbus ADU. The Modbus packet header consists of four fields and seven bytes, which are defined as follows.

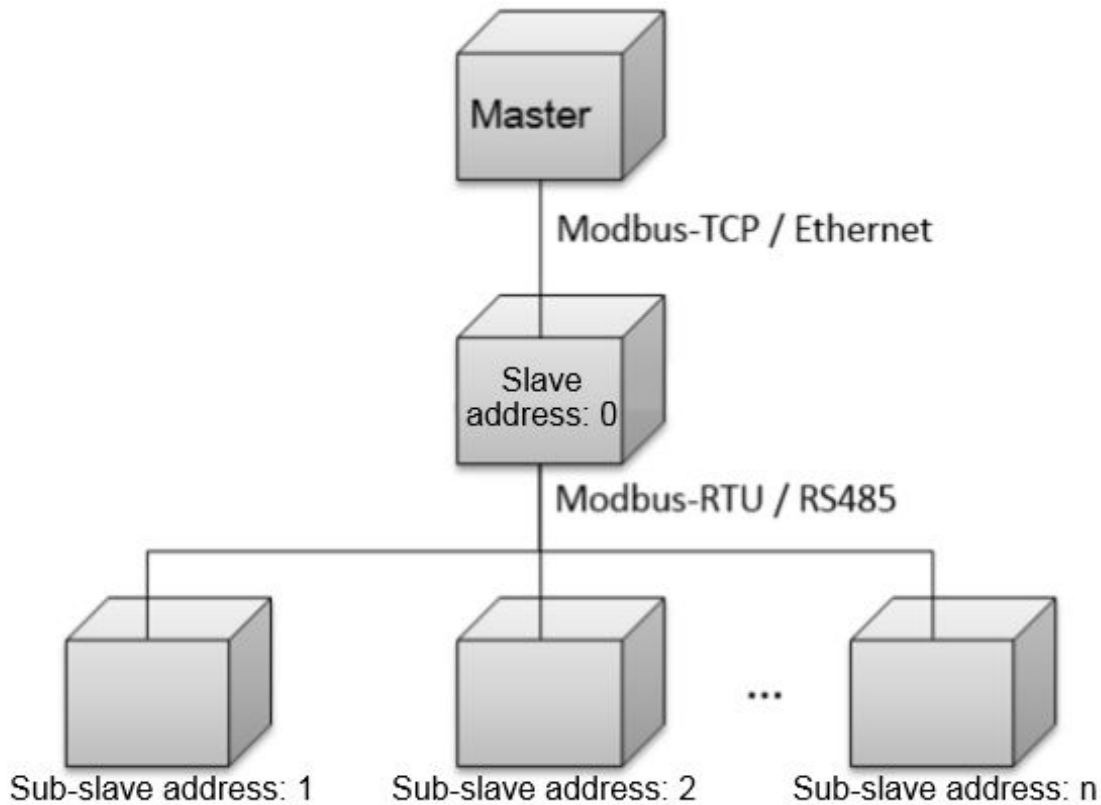
**Table 6-2** MBAP definition

Data Field	Length (Byte)	Description	Client	Server
Transmission identifier	2	Matching identifier between a request frame and a response frame	Assigned by the client; better be unique for each data frame	The identifier of the response frame from the server must be consistent with that of the request frame.
Protocol type	2	0 = Modbus protocol	Assigned by the client; 0 by default	The identifier of the response frame from the server must be consistent with that of the request frame.
Data length	2	Follow-up data length	Assigned by the client based on the actual data frame	Assigned by the server based on the actual frame length
Logical device ID	1	0	Assigned by the client based on the actual data frame request	The identifier of the response frame from the server must be consistent with that of the request frame.

### 6.2.2.3 Communications Address

Based on the TCP communications host, unit 0 is used by default to access the directly connected slave node, and other addresses are used to access the downstream devices of the slave node. The default address of the slave node is 0. The address is adjustable.

**Figure 6-5** Communications address of the three-layer object structure



### 6.2.2.4 TCP Port

In a local area network or VPN environment, the master node may actively initiate TCP socket link establishment to the slave node. The master node can use the 6607 port to request data services from the slave node.

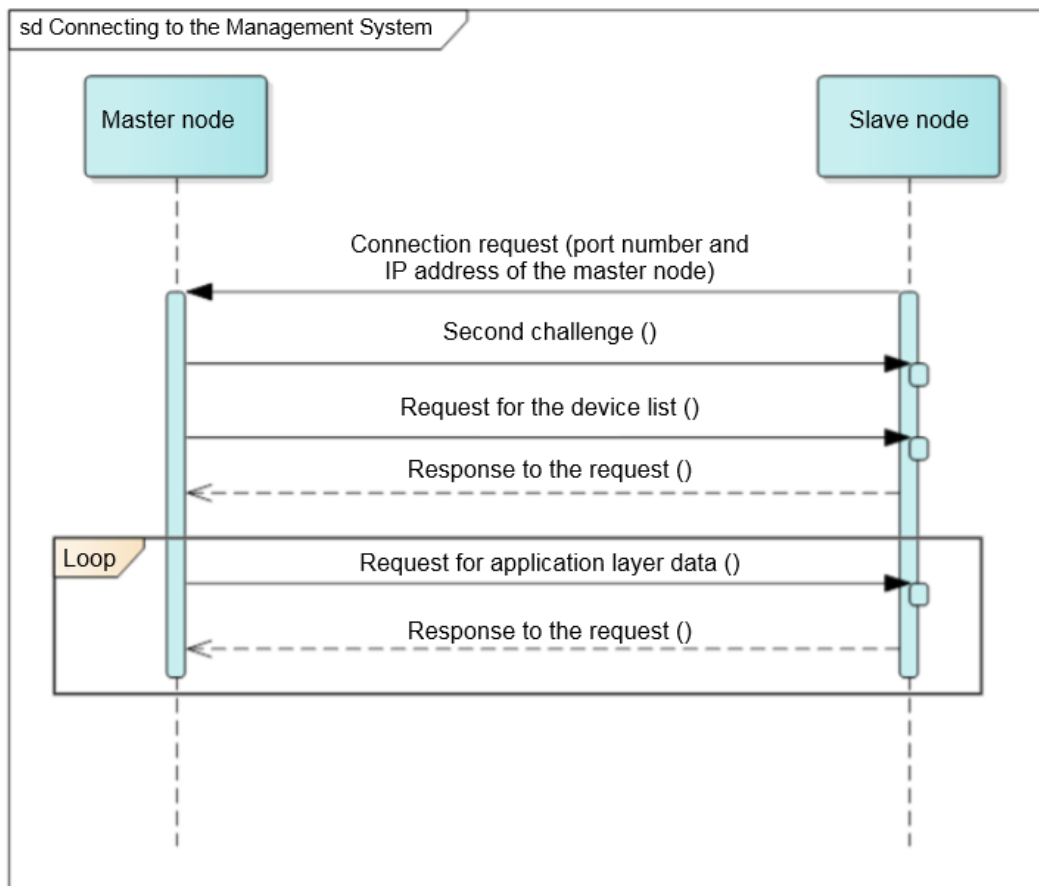
In a non-VPN environment across the public network, the device deployed on the internal network needs to initiate TCP socket link establishment to the master node exposed on the public network. In this case, you need to preset the fixed access port number of the master node on the slave node. To ensure security and reduce traffic, the master node must provide at least one encrypted port and one non-encrypted port.

### 6.2.2.5 TCP Link Establishment Process

This section focuses on the cross-public network application.

The following figure shows the process of connecting a slave node.

**Figure 6-6** Process of establishing a secure TCP connection



## 6.3 Application Layer

### 6.3.1 Function Code List

**Table 6-3** Function code list

Function Code	Meaning	Remarks
0x03	Read registers.	Continuously reads a single register or multiple registers.
0x06	Write a single register.	Writes into a single register.
0x10	Write multiple registers.	Continuously writes into multiple registers.

### 6.3.2 Exception Code List

The exception codes must be unique for each network element (NE) type. The names and descriptions should be provided in both the Chinese and English NE

interface document. Different versions of the same NE type must be backward compatible. Exception codes in use cannot be assigned to other exceptions.

**Table 6-4** Exception codes returned by an NE (0x00–0x8F are for common exception codes)

Code	Name	Description
0x01	Illegal function	The function code received in the query is not an allowable action for the server (or slave node). This may be because the function code is only applicable to newer devices, and was not implemented in the unit selected. It could also indicate that the server (or slave node) is in the wrong state to process a request of this type, for example because it is not configured and is being asked to return register values.
0x02	Illegal data address	The data address received in the query is not an allowable address for the server. More specifically, the combination of reference number and transfer length is invalid. For a controller with 100 registers, the PDU addresses the first register as 0, and the last one as 99. If a request is submitted with a starting register address of 96 and a quantity of registers of 4, then this request will successfully operate (address-wise at least) on registers 96, 97, 98, 99. If a request is submitted with a starting register address of 96 and a quantity of registers of 5, then this request will fail with Exception Code 0x02 "Illegal Data Address" since it attempts to operate on registers 96, 97, 98, 99 and 100, and there is no register with address 100.
0x03	Illegal data value	The value contained in the query data field is not an allowable value for the server (or slave). The value indicates a fault in the structure of the remainder of a complex request, such as an incorrectly implied length. It specifically does not mean that a data item submitted for storage in a register has a value outside the expectation of the application program since the Modbus protocol is unaware of the significance of any particular value of any particular register.
0x04	Slave node failure	An error occurred while the server was attempting to perform the requested action.
0x06	Slave device busy	The server cannot accept a Modbus request PDU. A client application determines whether and when to resend the request.

Code	Name	Description
0x80	No permission	An operation is not allowed because of a permission authentication failure or permission expiration.

### 6.3.3 Reading Registers (0x03)

#### 6.3.3.1 Frame Format of a Request from a Master Node

Data Field	Length (Byte)	Description
Function code	1	0x03
Register start address	2	0x0000–0xFFFF
Number of registers	2	1–125

#### 6.3.3.2 Frame Format of a Normal Response from a Slave Node

Data Field	Length (Byte)	Description
Function code	1	0x03
Number of bytes	1	2 x N
Register value	2 x N	N/A

N refers to the number of registers.

#### 6.3.3.3 Frame Format of an Abnormal Response from a Slave Node

Data Field	Length (Byte)	Description
Function code	1	0x83
Exception code	1	See <a href="#">6.3.2</a> .

#### 6.3.3.4 Examples

This section takes the Modbus-TCP communications frames as an example. The differences between Modbus-RTU and Modbus-TCP lie in the additional address field and the CRC. Pay attention to the differences when using the Modbus-RTU frames. This also works for the follow-up examples.

The master node sends a query request (register address: 32306/0X7E32) to the slave node (logical device ID: 00).

Description		Frame Data
MBAP header	Protocol identifier	00
		01
	Protocol type	00
		00
	Data length	00
		06
Logical device ID	00	
Function code		03
Data	Register address	7E
		32
	Number of registers	00
		02

Normal response from the slave node

Description		Frame Data
MBAP header	Protocol identifier	00
		01
	Protocol type	00
		00
	Data length	00
		07
Logical device ID	00	
Function code		03
Data	Number of bytes	04
	Register data	00
		00
		00
		01



Abnormal response from the slave node

Description		Frame data
MBAP header	Protocol identifier	00
		01
	Protocol type	00
		00
	Data length	00
		03
Logical device ID	00	
Function code		83
Data	Error code	03

## 6.3.4 Writing a Single Register (0x06)

### 6.3.4.1 Frame Format of a Request from a Master Node

Data Field	Length (Byte)	Description
Function code	1	0x06
Register address	2	0x0000–0xFFFF
Register value	2	0x0000–0xFFFF

### 6.3.4.2 Frame Format of a Normal Response from a Slave Node

Data Field	Length (Byte)	Description
Function code	1	0x06
Register address	2	0x0000–0xFFFF
Register value	2	0x0000–0xFFFF

### 6.3.4.3 Frame Format of an Abnormal Response from a Slave Node

Data Field	Length (Byte)	Description
Function code	1	0x86

Data Field	Length (Byte)	Description
Exception code	1	See <a href="#">6.3.2</a> .

### 6.3.4.4 Examples

A master node sends a command (register address: 40200/0X9D08) to a slave node (address: 00).

Description		Frame data
MBAP header	Protocol identifier	00
		01
	Protocol type	00
		00
	Data length	00
		06
Logical device ID	00	
Function code		06
Data	Register address	9D
		08
	Register data	00
		00

Normal response from the slave node

Description		Frame Data
MBAP header	Protocol identifier	00
		01
	Protocol type	00
		00
	Data length	00
		06
Logical device ID	00	
Function code		06

Description		Frame Data
Data	Register address	9D
		08
	Register data	00
		00

Abnormal response from the slave node

Description		Frame Data
MBAP header	Protocol identifier	00
		01
	Protocol type	00
		00
	Data length	00
		03
Logical device ID	00	
Function code		86
Data	Error code	04

## 6.3.5 Writing Multiple Registers (0x10)

### 6.3.5.1 Frame Format of a Request from a Master Node

Data Field	Length (Byte)	Description
Function code	1	0x10
Register start address	2	0x0000–0xFFFF
Number of registers	2	0x0000–0x007b
Number of bytes	1	2 x N
Register value	2 x N	Value

N refers to the number of registers.

### 6.3.5.2 Frame Format of a Normal Response from a Slave Node

Data Field	Length (Byte)	Description
Function code	1	0x10
Register address	2	0x0000–0xFFFF
Number of registers	2	0x0000–0x007b

### 6.3.5.3 Frame Format of an Abnormal Response from a Slave Node

Data Field	Length (Byte)	Description
Function code	1	0x90
Exception code	1	See <a href="#">6.3.2</a> .

### 6.3.5.4 Examples

The master node sets the register address 40118/0X9CB6 to 2 and the register address 40119/0X9CB7 to 50 for the slave node (address: 00). The request frame format is as follows.

Description		Frame Data
MBAP header	Protocol identifier	00
		01
	Protocol type	00
		00
	Data length	00
		0B
Logical device ID	00	
Function code		10
Data	Register address	9C
		B6
	Number of registers	00
		02
	Number of bytes	04
	Register data	00

Description		Frame Data
		02
		00
		32

Normal response from the slave node

Description		Frame Data
MBAP header	Protocol identifier	00
		01
	Protocol type	00
		00
	Data length	00
		06
Logical device ID	00	
Function code		10
Data	Register address	9C
		B6
	Number of registers	00
		02

Abnormal response from the slave node

Description		Frame Data
MBAP header	Protocol identifier	00
		01
	Protocol type	00
		00
	Data length	00
		03
Logical device ID	00	
Function code		90

Description		Frame Data
Data	Error code	04

### 6.3.6 Reading Device Identifiers (0x2B)

This command code allows reading identifiers and added packets that are relevant to the physical and function description of the remote devices.

Simulate the interface of the read device identifier as an address space. This address space consists of a set of addressable data elements. The data elements are objects to be read, and the object IDs determine these data elements.

A data element consists of three objects:

1. Basic device identifier: All objects of this type are mandatory, such as the vendor name, product code, and revision version.
2. Normal device identifier: Except basic data objects, the device provides additional and optional identifiers and data object description. Define all types of objects according to definitions in the standard, but the execution of this type of objects is optional.
3. Extended device identifier: In addition to the normal data objects, the device provides additional and optional identifiers and special data object description. All the data is related to the device.

**Table 6-5** Reading device identifiers

Object ID	Object Name or Description	Type	Mandatory or Optional (M/O)	Type
0x00	Manufacturer name	ASCII character string	M	Basic
0x01	Product code	ASCII character string	M	
0x02	Main revision version	ASCII character string	M	
0x03–0x7F	-	-	-	Normal
0x80–0xFF	-	-	-	Expansion

### 6.3.6.1 Command for Querying Device Identifiers

**Table 6-6** Request frame format

Data Field	Length (Byte)	Description
Function code	1	0x2B
MEI type	1	0x0E
ReadDevId code	1	01
Object ID	1	0x00

**Table 6-7** Frame format for a normal response

Data Field	Length (Byte)	Description		
Function code	1	0x2B		
MEI type	1	0x0E		
ReadDevId code	1	01		
Consistency level	1	01		
More	1	-		
Next object ID	1	-		
Number of objects	1	-		
Object list	First object	Object ID	1	0x00
		Object length	1	N
		Object value	N	-
	...	...	...	...

**Table 6-8** Object list

Object ID	Object Name or Description	Description	Type
0x00	Manufacturer name	HUAWEI	Basic
0x01	Product code	SUN2000	

Object ID	Object Name or Description	Description	Type
0x02	Main revision version	ASCII character string, software version	

**Table 6-9** Frame format for an abnormal response

Data Field	Length (Byte)	Description
Function code	1	0xAB
Exception code	1	See <a href="#">6.3.2</a> .

### 6.3.6.2 Command for Querying a Device List

**Table 6-10** Request frame format

Data Field	Length (Byte)	Description
Function code	1	0x2B
MEI type	1	0x0E
ReadDevId code	1	03
Object ID	1 byte	0x87

**Table 6-11** Frame format for a normal response

Data Field	Length (Byte)	Description		
Function code	1	0x2B		
MEI type	1	0x0E		
ReadDevId code	1	03		
Consistency level	1	03		
More	1	-		
Next object ID	1	-		
Number of objects	1	-		
Object list	First object	Object ID	1	0x87



Data Field			Length (Byte)	Description
		Object length	1	N
		Object value	N	-
	...	...	...	...

**Table 6-12** Object list

Object ID	Object Name	Type	Description
0x80–0x86	Reserved	--	Returns a null object with a length of 0.
0x87	Number of devices	int	Returns the number of devices connected to the RS485 address.
0x88	Description about the first device	ASCII character string See the device description definitions.	Returns only description about the first device if a NE allows only one device to be connected to each RS485 address.
0x8A	Description about the second device	-	-
-	-	-	-
0xFF	Description about the 120th device	-	-

### 6.3.6.3 Device Description Definition

Each device description consists of all "attribute=value" character strings.

"Attribute ID=%s;attribute ID=%s;... attribute ID=%s"

For example: "1=SUN2000MA-XXKTL;2=V100R001C00SPC100;3=P1.0-D5.0;4=123232323;5=1;6=1.1"

**Table 6-13** Attribute definition

Attribute ID	Name	Type	Description
1	Device model	ASCII character string	SUN2000
2	Device software version	ASCII character string	-
3	Port protocol version	ASCII character string	See the interface protocol version definitions.
4	ESN	ASCII character string	-
5	Device ID	int	0, 1, 2, 3...(assigned by NEs; 0 indicates the master device into which the Modbus card is inserted)
6	Feature version	ASCII character string	-

**Table 6-14** Frame format for an abnormal response

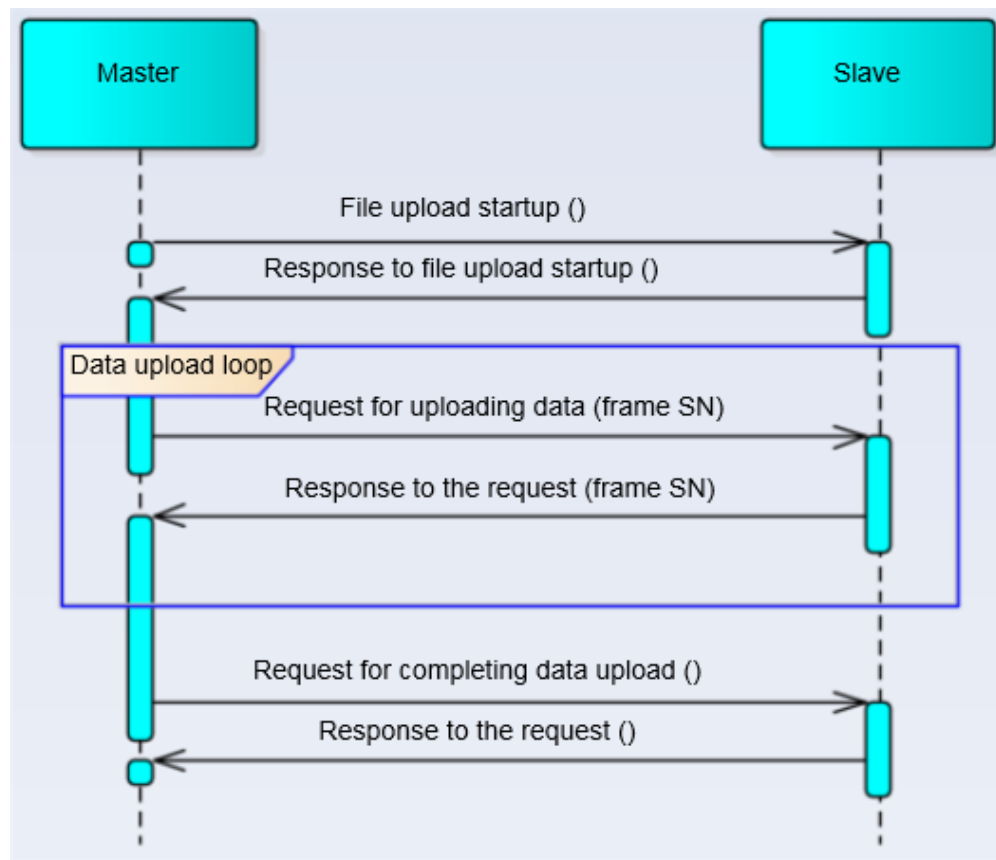
Data Field	Length (Byte)	Description
Function code	1	0xAB
Exception code	1	See <a href="#">6.3.2</a> .

## 6.3.7 Huawei-defined Functions (0x41)

### 6.3.7.1 Uploading Files

Uploading files means uploading them by stream data from a slave node to a master node. The following figure shows the file uploading process.

**Figure 6-7** File uploading process



### 6.3.7.1.1 Starting the Upload

Frame format of a request from a master node

**Table 6-15** PDU data field of the request frame for starting upload (0x05)

PDU Data Field	Length (Byte)	Description
Function code	1	0x41
Sub-function code	1	0x05
Data length	1	1 + N
File type	1	Unique ID of a file
Customized data	N	-

**Table 6-16** PDU data field of the response frame for starting upload (0x05)

Data Field	Length (Byte)	Description
Function code	1	0x41
Sub-function code	1	0x05
Data length	1	6 + N
File type	1	Unique ID of a file
File length	4	-
Data frame length	1	-
Customized data	N	-

**Table 6-17** PDU data field in the abnormal response frame of the slave node

PDU Data Field	Length (Byte)	Description
Error code	1	0xC1
Exception code	1	See <a href="#">6.3.2</a> .

If the exception code is 0x06, resend the request after 10 seconds. A request can be resent for no more than six times.

### 6.3.7.1.2 Uploading Data

**Table 6-18** Request frame for uploading data (0x06)

PDU Data Field	Length (Byte)	Description
Function code	1	0x41
Sub-function code	1	0x06
Data length	1	3
File type	1	Unique ID of a file

PDU Data Field	Length (Byte)	Description
Frame No.	2	0x0000–0xFFFF

**Table 6-19** Response frame for uploading data (0x06)

PDU Data Field	Length (Byte)	Description
Function code	1	0x41
Sub-function code	1	0x06
Data length	1	3 + N
File type	1	-
Frame No.	2	0x0000–0xFFFF
Frame data	N	-

**Table 6-20** Abnormal response frame for uploading data

PDU Data Field	Length (Byte)	Description
Error code	1	0xC1
Exception code	1	See <a href="#">6.3.2</a> .

### 6.3.7.1.3 Completing the Data Upload

**Table 6-21** Request frame for completing the data upload

PDU Data Field	Length (Byte)	Description
Function code	1	0x41
Sub-function code	1	0x0c
Data length	1	1
File type	1	-

**Table 6-22** Response frame for completing the data upload

PDU Data Field	Length (Byte)	Description
Function code	1	0x41
Sub-function code	1	0x0c
Data length	1	3
File type	1	-
File CRC	2	-

**Table 6-23** Abnormal response frame for completing the data upload

Data Field	Length (Byte)	Description
Error code	1	0xC1
Exception code	1	See <a href="#">6.3.2</a> .

#### 6.3.7.1.4 Timeout Processing

**Table 6-24** Processing specifications of sub-process timeout

Name	Restrains
Response timeout period for starting an upload	10s
Response timeout period for uploading data	10s
Number of times of resending a data upload command	6
Response timeout period for completing a data upload	10s